

# THE LINK

YOUR CONNECTION TO WHAT'S HAPPENING AT

SPRING 2018 | Vol LXXVIII No. 2, May 2018



## Camp Changes Everything - My Home Away From Home

*A Camper's Perspective by Maggie Rose Connolly*

**M**y parents always say that I'm from North Carolina, but in total honesty I wouldn't really know. After moving nine times by the time you're thirteen and only living in the place where you were born for about six weeks, you start to wonder where you really are from. It took me a few years, but I finally figured it out. I'm a child of God, and aside from that it doesn't really matter. But, at the same time, knowing that the longest you've ever lived anywhere is about three years, you do find comfort in the constant elements of your life.

For a while it was my grandparents' house in England, but recently they moved to a smaller apartment, so that, as you can imagine, it's not quite the same. Then, when I was about eight, I went to Lutheridge for the first time. It was my first time away from my parents, and me being an only child, that was pretty significant at the time. That now familiar feeling of driving through the front entrance (that feels like a warm embrace from a relative who lives far away) was then alien to me. I still remember my dad pulling me aside before he left and telling me that he loved me and that he was proud of me. We both promptly started crying; however, he blamed it on a bug that had gotten in his eye (a story which he still sticks to). But I also remember seeing my mom again after the short half-week that I had been away and not saying, "I love you" or "I missed you so much" but instead I said, "Oh my gosh it was so fun! Can I go again next year but instead for a week?" She found that pretty humorous.



It was just as magical the second year, if not more. I have gone every year since then, and last summer, I got my five-year-patch. This place has been so pivotal in my life since the age of eight. It feels like a home for me. Every single moment I think

of when I have been there can only be described as "coming home." All of the songs, the skits, the slip-n-slide, the "whale" that's in the lake, the cabins, the campfires at the end of the week, cardiac, crafts, the pool, and everything else. The amount of love and acceptance that I feel when I'm there can never be described.

I've had a lot of fun moving so much. There are definitely perks. I've learned a lot about myself and how I cope in certain situations. But when you read fantasy books about kids complaining about living in one place for their whole life, and knowing everyone in their town, you kind of sit back and think, "that sounds amazing. I can see the downsides, but pretty amazing." The main reason I say this is because I haven't seen one of my best friends face-to-face for 6 years, so that really does show how important Lutheridge is to me.



I've always had a connection with various things. For example: music, books, my family, art, but nothing can even come close to Lutheridge. Every once in a while, my faith kind of weakens a little, and Lutheridge is kind of like a booster shot from God.

The definition for home is, "the place where one lives permanently, especially as a member of a family or household." Naturally, I really don't have one because it's described as where you live permanently. However, it also mentions family. My family is pretty great, but it really does feel like a family reunion whenever I go back to Lutheridge. So, I guess Lutheridge really is home for me, and whenever I leave I'm not home-sick. I'm more "Lutheridge-sick."



You are invited to experience the benefits of a NovusWay camp this summer – Lutheridge, Lutherock, Luther Springs, or Lutheranch. Check out a full array of programs and register at [www.NovusWay.org](http://www.NovusWay.org) or call 828-684-2361.

See page 4 of the LINK for summer camp and family opportunities at Lutheranch.

**NEW**



## Tent Village At Lutheridge to Open for High School Youth



Members of St. John's Lutheran Church in Salisbury, NC have spent many volunteer hours constructing the Tent Village

A new camping area is "rising" at Lutheridge! It's the first new camping area at Lutheridge in over a decade. Among the goals and naming gifts of The Heritage Campaign, launched in July 2010, was a Tent Village and eight tent platforms.

Projected cost for

the Tent Village was \$50,000; for each tent platform \$10,000. The vision took hold immediately.

Three naming gifts for tent platforms came within the first year of the Heritage

Campaign. Bob and Amy DeVries made a gift in honor of the DeVries family (Julie, Stephanie, Elizabeth, Robert and Anna). A naming gift from The Rev. Lynda Ernst and Mr. Chip Ernst honored their children, Rachel and Chelsea.

A naming gift from the Reiser and Stelling families was given in memory and honor of Carl and Mary Katherine Stelling, Walter and Martha Reiser, John Shealy and Gwin Reiser, and William and Anne Reiser. The lakeside tent village for middle school youth at Lutheridge has four platform tent cabins, enjoyed by campers for years.

The Heritage vision for a tent village for high school youth came in God's time – 2015 to be exact. Keith Johnson planted the idea in the mind of Pastor Rhodes Woolly of St. John's Lutheran Church, Salisbury, NC. St. John's Council embraced the challenge later that year. At St. John's bi-annual congregational retreat at Lutheridge held in the fall of 2016 a group of 150-200 St. John's members visited the site. That was enough. *"Beyond the need,"* Pastor Woolly wrote to the congregation, *"the design of this Tent Village really caught our attention. Each of the four platforms will be elevated to look like a tree house. Heavy duty canvas tents will cover the sleeping area, with a small deck serving as the entrance. This village is nicely tucked into the woods behind Pioneer B and Wilderness cabin areas."*

While most campers spend all week on-site, a growing number of opportunities at NovusWay sites are offered for middle and high school youth who yearn for more adventure. The Tent Village at Lutheridge and Lutherock is home base for Outdoor Adventure Program (OAP) activities. Campers begin and end their week at the tent village. Much of the week is spent off-site hiking, rafting, spelunking or rock climbing.

People at St. John's quickly got involved. Contributions toward the \$50,000 goal began last year. A volunteer work crew was organized to help defray the project cost by assisting in the construction. Construction trips began in October 2017. Gary Taylor, a leader among St. John's volunteers, writes: *"We had an amazing group of guys that started this journey in October of last year to clear the site and continue to answer God's call to see the tent village able to be used by so many teens as it's designed to be."* St. John's volunteers are continuing their work on the Tent Village this month. Mike Agee, another of St. John's volunteer leaders, is hoping for good weather like, he says, Epiphany volunteers always get! *"So far,"* Mike says, *"we have worked in the rain, snow, cold and high winds. It's been a time of great fellowship and opportunity to serve. Even the most difficult weather has not damped our spirits."* Assisted by volunteers from Epiphany Lutheran Church, Winston-Salem two of the four elevated platforms will be completed this spring in time for summer camp.

To date, gifts and pledges from St. John's members total over \$53,000 for what will be the St. John's Tent Village. Construction costs increased since the Heritage Campaign began in 2010. Construction codes and inspection costs add to the total cost of each elevated tent cabin. Total cost for each cabin is approximately \$18,300. Each tent cabin will hold 10 persons. Two will be ready for high school youth this summer! The remaining two are expected to be ready for summer camp 2019.

So why is this important? What difference will this make for God's children? St. John's Cora Shinn knows. *"There is no way to measure the impact Lutheridge has had in our lives – such meaningful guidance in our faith development, living in God's beautiful creation, lasting friendships, development in leadership skills, and the list goes on and on. I truly believe that Lutheridge is high on the list of making my daughter and grandson who they are today. It's the best return on every dollar we spent to make a week at Lutheridge possible for them."*

Pastor Tim Canniff-Kuhn is excited about the opportunity to integrate the two elevated tent cabins into this summer's program. With the lakeside tent village for middle school youth and the St. John's elevated village for senior high youth, there is a new "dimension" to Lutheridge's OAP offerings this summer. For program information and registration visit [www.NovusWay.org](http://www.NovusWay.org) or call 828-209-6301 or 828-209-6302.

If you would like to volunteer and enjoy carpentry, contact Cameron in Lutheridge maintenance at 828-768-5715 to offer assistance with completing the new tent platforms before camp begins in June.

The Lutheran Builders of WNC recently had a good, productive day at Lutheridge. They painted the exterior of the CAB (Children's Activity Building). Thank you to these volunteers and their leader, Rev. Alfred Mullen!



Raised tent platforms will be used by high school campers in the Outdoor Adventure Program



## Living Waters Outdoor School - Caring for God's Creation

In 2018 Lutherock received a grant from the John and Barbara McLendon Family Foundation in Greensboro, NC to purchase a wood boiler. The wood boiler is an environmentally friendly heat source that is powered by firewood obtained onsite at Lutherock that will expand the Living Waters Outdoor School program to nine months, allowing more groups to see conservation and preservation of our natural resources first-hand. Lutherock staff will use this as a teaching tool for all guests, especially with the Living Waters Outdoor School program.

The addition of this natural heat source also allows Lutherock to host, provide meals, and heat the Founder's Lodge pavilion for multiple groups at the same time. In the future, there is also the capability to connect into the hot water system, thus allowing the boiler to heat domestic hot water during the summer. This is another way that Lutherock can care for God's creation and conserve our natural resources. For more information on the Living Waters Outdoor School, contact Kara at 828-733-5868 or [KRidenhour@Lutherock.org](mailto:KRidenhour@Lutherock.org).



Founder's Lodge at Lutherock has a new wood boiler heat source

# REFLECTIONS FROM THE EXECUTIVE DIRECTOR



## The Importance of Camp

As you know, we are living in challenging times, with a constantly changing landscape in technology, the church, our schools, our culture, and our world as a whole. I believe there has never been a more critical moment for camping and retreat ministries like ours to step up and serve others in a hurting world.

Something very special and life-changing takes place in the overnight Christian camp and retreat environment of 24-hour-a-day community, shared meals, late-night conversations, and inspiring programming and worship. In this unique setting, we have an unparalleled opportunity to build relationships and trust that become the foundation for introducing all who come here to the life-giving truth of Jesus Christ.

Understanding the impact of this ministry on the lives of others, our staff team has written and embraced a ministry alignment plan that drives everything we do. We are aligned, organization-wide, around an unwavering commitment to creating a healthy culture of trust, safety, and care, organizational excellence, top-notch service, beautiful sites and facilities, warm and gracious hospitality, and life-transforming ministry programming. In all of this, we strive to be Christ-centered, people-focused, and love- and service-driven.

We embrace a servant-leadership philosophy that puts our leadership team at the bottom of the organizational chart – looking, listening, and serving upwards to the amazing people on our team, whose dedication, hard work, and personal sacrifice make this ministry possible. We believe that if we lead and love and serve our people well, they will be inspired and empowered to lead and love and serve those who come here, thereby creating an environment where campers and guests encounter authentic Christian community and relationships, meet Jesus, and have transformational camp and retreat experiences.

Also, on our team and in the larger NovusWay family are the countless volunteers, Board members, donors, and you in the churches and Synods who partner with us in this important ministry work. We could not do this without you, and we THANK YOU for your on-going leadership, partnership, and support!

Currently and as we approach summer, our marketing and fundraising efforts are centered around raising money for scholarships so that no child will be turned away from experiencing God's love at camp due to lack of funds.

Now more than ever, we need help in carrying out this life-giving, life-changing mission and ministry. Please send your youth, send your church members and councils, use our sites and facilities (which are your sites and facilities), and please continue to share with us your gifts of wisdom, wealth, and service.

Lastly, please pray for us and our ministry as we will continue to pray, with gratitude, for you.

Thank you and may God bless you richly!

Boyd W. Harris IV  
Executive Director-CEO

## REACH OUT! CONNECT! Help Us Fund Scholarships

**We need you help!** Last year, Novus Way and our four ministry sites, provided scholarship support to 495 campers at a cost to the ministry of \$124,999.

Among those scholarships is a very important outreach program called *ReachOut Connect*, which encourages churches to partner with community organizations to bring cross-cultural campers to camp who likely would not typically attend, or be financially able to attend camp.

In recent years, we've received grant support for campers through this program in the range of \$20,000 to \$30,000 annually. Unfortunately, this year, due to uncontrollable market circumstances, we will only receive half of that.

**Your help is needed to cover this known 2018 shortfall in camper scholarship funding!**

This specific need in the *ReachOut Connect* program is reflective of a larger need across the whole ministry – lots of families require camper scholarship support so that their kids can go to camp and experience the life-changing message, community, and programs that take place in the overnight Christian camping environment.

**We've made a ministry commitment that we will never turn a child away because they can't afford to come to camp!**

And your gifts make it possible to honor that commitment. Thank You and God Bless You for your partnership and generosity.

If you would like more information about donating to the *ReachOut Connect* program and scholarships at Lutheridge, Lutherock, Luther Springs, and Lutheranch, please contact Keith Trout, [kt trout@novusway.org](mailto:kt trout@novusway.org) or 864-313-1453.

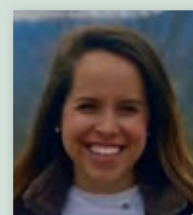


## Novusway Staff Update



**Darlene Bailey** has been married for almost 40 years to Mike and they have lived in Woodland, Alabama for most of their married life. They have two beautiful daughters, Ashley and Alyssa and one son in law, Christopher as well as two precious grandson's, Logan and Easton. About 25 years ago she began catering after hosting a few family weddings. Darlene was recently praying for a new direction and we are pleased to say that Darlene will now be the head cook serving campers and groups at Lutheranch.

**A SPECIAL THANK YOU TO JET AND SIMPLY CATERING IN CARROLLTON, GEORGIA FOR THE SUPERB FOOD SERVICE AND CATERING SERVICES THEY PROVIDED DURING THE START-UP OF THE MCKANNA-SANDROCK RETREAT CENTER!**



**Sarah Newby** is from Raleigh, NC and has joined the Lutheridge staff as Efird Office Assistant. She attended North Carolina State University and studied Livestock, Poultry and Agriculture Business. She loves being in the camp atmosphere and is grateful to God for bringing her to Lutheridge. The registration office is thrilled to have her assistance this summer. She can be reached at [efirdoffice@novusway.org](mailto:efirdoffice@novusway.org) or 828-209-6301.



WWW.NOVUSWAY.ORG

828.684.2361

## Website News... www.NovusWay.org

Lutheridge, Lutherock, Luther Springs and Lutheranch are excited to announce that we have new websites! The new websites give you the opportunity to register for camps, retreats and to make donations.

Did you know that the upgrade to our websites has made it easier to donate online and provides you with more options? You can now set up your gift to be automatically deducted from a credit card or your checking or savings account. Simply click on recurring donation after you enter the amount you wish to give. You will then be prompted to choose one of four frequency options: monthly, quarterly, semi-annually or annually. Payments to a pledge, a special project or specific need may be made through this portal. Gifts may also be made in memory or honor of someone. Click on Support Us at the top of the page or Donate at the bottom of the page of the camp you wish to support. (www.lutheridge.org, www.lutherock.org, www.luthersprings.org or www.lutheranch.org) Recurring donations can be cancelled at any time by contacting us. Of course, one-time gifts are always appreciated and can also be done via the websites. If you have questions about using our website to donate please call the home office at 828-864-2361.



A 2004 Buick Century in excellent condition was recently donated to NovusWay Ministries by Mrs. Jane Keels of Columbia, SC. Mrs. Keels and her late husband were involved with the Ministry for many years. Pictured here receiving the vehicle are NovusWay staff members Craig Rieger, Becky Maxwell and Bo Harris.



## Summer at Lutheranch!



- **July 15-20 - Summer Camp!** Kids will enjoy counselors with an ear to listen, a spirit full of zany fun and heart full of Christ's love. On-site camp activities may include swimming, campfires, canoeing, games, low ropes challenge course, hiking, age-appropriate crafts, Bible study, and worship.

**Groundbreakers (1st – 5th grade),  
Confirmation Ranchers (6th – 8th grade)**

- **July 26-29 - Family Camp!** Enjoy the fun of summer camp as a family. This stress-free, affordable, faith-filled vacation is ideal for families, individuals, or extended families. Kids love spending the morning with counselors. Parents and grandparents enjoy some time for themselves. Crafts, canoeing, swimming, fishing, hiking, meaningful worship and more!

**Register at [www.Lutheranch.org](http://www.Lutheranch.org) or contact [registrar@novusway.org](mailto:registrar@novusway.org)**

- **Family Stay-cations! \$350 - \$600**  
**Enjoy the fun of summer camp as a family, making friends and memories that will last a lifetime!**

**June 10-13 (Sun.-Wed.),  
June 13-16 (Wed.-Sat.),  
June 10-16 (Sun.-Sat.),  
July 2-5 (Mon.-Thur.),  
July 5-8 (Thurs.- Sun.), or  
July 2-8 (Mon.-Sun.)**  
**Contact [ayates@novusway.org](mailto:ayates@novusway.org)  
or 828-209-6328**



## Can you help us?

- Needed for Summer Camp 2018: We would like to purchase two cameras before the summer camp season for our Marketing staff and Intern to be able to take better quality photos of campers. If you can help by making a cash donation, please send your donation to NovusWay, PO Box 830, Arden, NC 28704, and indicate that your donation is for the CAMERA FUND.
- GOLF CARTS in great working condition (gas or electric with lights) are needed at Lutheridge for our guests and staff. It is helpful if the carts have a back seat that can flip down for storage. Contact Kevin Clifton at [kclifton@NovusWay.org](mailto:kclifton@NovusWay.org) if you can help or call 828-684-2361.
- A MINIVAN is needed at Lutheranch. If you have a vehicle to donate in good working condition, contact Craig Rieger [crieger@NovusWay.org](mailto:crieger@NovusWay.org) or call Craig at 828-209-6313.



**Kevin Clifton** Kevin Clifton has joined the NovusWay team as Lutheridge Property Manager.

Kevin's background in commercial construction project management and facilities management will be a great asset to the ministry. Most recently, Kevin served as facilities manager of a large school for missionary children in Chiang Mai, Thailand where he and his wife, Anjie, and their three sons lived and served as missionaries for almost five years.



**Chris Ryan** joined the Lutheridge staff in February providing Groundskeeping and Maintenance services. Chris is a proud North Carolinian, born and raised, who enjoys the outdoors and homemade BBQ. The campus is looking great this spring thanks to his help!

## Save the Date!

August 11, 2018 will be a special day at Luther Springs as the Pauline Schmertmann Wing will be dedicated (postponed from September 9, 2017 when Hurricane Irma devastated Florida). The Morgan Outdoor Classroom (pavilion) will also be dedicated and a groundbreaking ceremony for the Atonement Chapel will take place. Details are still coming together so watch for further information at [www.LutherSprings.org](http://www.LutherSprings.org).

Also, check out the summer camp schedule and awesome non-summer programs at Luther Springs! Register online or contact [registration@novusway.org](mailto:registration@novusway.org), 828-684-2361.



# FALL 2018 & SPRING 2019 PROGRAMS

REGISTRATION IS OPEN AT  
WWW.NOVUSWAY.ORG OR CALL 828-684-2361



## Trail Maintenance Weekend

September 7-9, 2018  
April 26-28, 2019

There is always something to be done at Lutherock! All are welcome: youth groups, men's groups, women's groups, congregations, families and individuals! Projects could include trail maintenance, splitting and stacking firewood, blowing leaves, pressure washing, putting up and taking down platform tents and more. Contact Jacob Ridenhour with questions: jridenhour@lutherock.com. Meals provided (Saturday Breakfast-Sunday Lunch). Housed in cabins or Founders Lodge. If these dates don't work for you but you want to volunteer please be in touch with Jacob!

**FREE**



## God's Work Our Hands Day

September 8, 2018

Youth groups, men's groups, women's groups, congregations, families, individuals! Projects may include clearing trails, chopping wood, painting, cleaning, sorting and organizing or a special building project. Our main day of service will be Saturday, with lunch provided. Overnight accommodations are based on availability. Contact Sue Mendenhall (727) 415- 9887. Space is limited!

**FREE**



## Practice Discipleship Retreat

September 27-30, 2018

Come to rest, re-energize, and reconnect with God and His action in our lives! Thursday evening we will gather for a time of networking and hospitality. Friday is an all-day intensive care course. Sat/Sun, we will offer workshops geared to equip you in your ministry to children and youth. Register for just one day or all four! To register, go to [www.FBSynod.com/Youth](http://www.FBSynod.com/Youth).

**Motel: \$80 +\$25 each extra night; Cabin \$65 +25 each extra night; Prices increase by \$25 1 month prior**



## Faith Alive

Lord's Prayer & Apostles' Creed: Sept 28-30, 2018

Old Testament - Nov 2-4, 2018

Holy Baptism & Holy Communion - Feb 1-3, 2019

10 Commandments & Luther/Reformation - April 5-7, 2019

Four weekends – seven retreats covering each part of the small catechism + Luther/Reformation History. Experiential learning leaves lasting lessons and builds relationships. Creative worship, crafts, songs, games and a campfire create an experience long remembered. Lutheridge staff provide supervision for campers, sharing their faithful witness. Come alone or with a group. Lessons are geared to middle school, but 5th graders and high school youth are welcome. Adults are encouraged, but not required to attend with their youth. Pastors Mary and Tim Canniff-Kuhn provide leadership for all retreats with involvement from other teachers.

**Youth: \$189; Adult: \$97**

**Youth receive a \$30 discount by registering at least a month prior to the retreat.**



**Weekend: Adult: \$115 Youth: \$60**  
**The Rock 5K: \$20**



## Faith Journey Confirmation

October 19-21, 2018 - Worship  
January 11-13, 2019 – Prayer

Bring your confirmation class to Luther Springs and let us do the teaching. Whether you bring youth to an occasional retreat to enhance what they are already learning or if you want to send youth to each of our retreats to cover all of their confirmation learning time, come join us on the journey! Luther Springs' counselors will guide campers through the weekend including worship, Bible Study, campfires, games, canoeing, archery, swimming, hiking and more!

**Youth: \$169; Adult: \$95 \*Early Bird**



## Fall Festival and The Rock 5K Trail Race

October 5-7, 2018

Come to the mountains for a weekend of Fall fun and adventure! The weekend will be full of the sights and tastes of Fall with Fall color hikes on the property. Apple Picking, High Ropes Course with zip line, Apple Cider Pressing, Hayrides, Bouncy Houses, campfires and more! Come for the whole weekend, or just show up for the day on Saturday (no pre-registration required for Saturday) The Rock 5k will also be on Saturday!



## 50Forward Living Well

Oct 19-21, 2018

Gather with others 50+ to find inspiration and information for Living Well in the late career/early retirement years. Engaging speakers, informative workshops, optional outings, and activities will explore this year's theme: LIVING SIMPLY. Creative worship, storytelling, delightful entertainment and great food make for a wonderful weekend. Bring a group of five and save! \* See [50Forwardlife.org](http://50Forwardlife.org) for schedule and presenters.

**Onsite: \$249; 5 or more: \$200; commuter: \$175**



## God Spa for Women

October 26-28, 2018

Soak in the beautiful scenery and solitude of Lutheranch, relaxing your mind, body, and spirit by enjoying Bible study and even a massage! Optional activities may include facials, manicures, pedicures and massages.

**Before 9/20: \$150; After \$180**



## Quilting Bee

November 1-4, 2018

Join renowned teacher Holly Anderson for a weekend of stitching fun. Bring your own project or create a wall-hanging of Holly's design. The retreat will also include daily devotions, a Trunk Show, Show & Tell, optional field trips to local fabric stores and the Folk Art Center. Bring friends and make new ones!

**\$267**



## Awakening Soul 2018 Justice is the Body of Love – Love is the Soul

of Justice

November 8-11, 2018

Featuring Ed Bacon – activist Episcopal priest, rector emeritus All Saints Episcopal Church, Pasadena, a regular guest on Oprah's Super Soul Sunday Series and author of the book, 8 Habits of Love, Heidi Kim – staff officer for Racial Reconciliation, TEC

(The Episcopal Church) Larry Maze – retired bishop, The Episcopal Diocese of Arkansas, frequent presenter at the Haden Institute's Dream and Spirituality Conference, Catherine Meeks, PhD – executive director of Absalom Jones Center for Racial Healing and author of Living Into God's Dream and Standing on Their Shoulders and our chaplain, Brian Prior – bishop, the Episcopal Church in Minnesota and music by the Awakening Soul Ensemble. For more information visit [www.awakeningsoulpresents.org](http://www.awakeningsoulpresents.org)



## Trailblazers

November 9-11, 2018

Theme: Thankful! What does it mean to truly be thankful and live a life of Thanksgiving? We will explore our thankfulness, play games, canoe, do archery, swim, make crafts and enjoy campfires! Students will stay in cabins with counselors and can come on their own or with a church group. Adult leaders and/or parent chaperones are welcome to join us and stay in Kuehner Center motel style rooms.

**Youth: \$130; Adult \$95 \*Early Bird**



## Living Forward with Joy & Peace

November 9-11, 2018

Living into the second half of life brings about a desire for self-renewal. We want to ensure our life is moving forward. Every age and life stage brings us closer in relationship to God and community. Come for an enriching and inspiring weekend while enjoying the beauty and peace of Luther Springs. Canoe Vause Lake, walk the trails, relax in a rocker with a book, and explore how God is calling you to serve Him in the second half of life. We'll explore biblical foundations about this life stage, enjoy meaningful discussions, sing hymns, exercise our creativity, make new friends, eat wonderful meals, and enjoy nature! Leaders: Margo Walbolt, ALOA FL; Pr. Stephen Kauffman and George Algozzina, Good Shepherd Lutheran Church, Tampa; and Pr. Richard Hafer, ALOA Executive Director.

**\$135**



## Mountaintop Family Advent Retreat

November 30-December 2, 2018

Go on an ADVENTure to prepare for Christmas. Disconnect from the hustle of the holidays and discover the joy of time together. Create shared memories around traditions such as lighting the tree, making Advent wreaths, carol singing, and choosing and cutting your own Christmas Tree at a nearby tree farm! Rate includes lodging for two nights, meals, and programming (Tree is an additional fee). Leaders: Pastor Will Rose and Cindy Morton-Rose

**Adult: \$115 Youth: \$60**

*\*Early Bird – Receive a \$30 discount when you register 30 days or more before the event.*



## NON SUMMER PROGRAMS

TO REGISTER CALL 828-684-2361  
OR WWW.NOVUSWAY.ORG



### Fun in the Son- Ski Retreats

January 18-21, 2019, Youth: \$154; Adult: \$97  
February 1-3, 2019, Youth: \$129; Adult: \$97

Let us handle your next youth ski retreat, while you sip hot cocoa by our fire! Lutherock staff will handle ski reservations, pick up your lift tickets, and rental cards before you arrive. Lutherock staff will provide evening programming and vespers each night. If your group doesn't want to ski, there are lots of other fun winter activities to do like sledding, tubing, hiking and ice skating! WE will work with you to create the experience you are looking for. Chaperones must accompany youth and provide transportation.

\*Ski costs are not included.\*



### Wild Women Weekends

Feb 1-3, Feb 8-10, March 8-10,  
March 15-17, March 22-24, 2019

Adult women of all ages will gain fresh vision and new strength in the beauty of the mountains. Bring a group to deepen fellowship with women you know or come alone to find kindred spirits among women from across the southeast. Bible study and creative worship will focus on God's promise in transition times. How do we move from one season to another without fear or regret? Where does Jesus offer JOY at every stage? Thoughtful reflection + Laughter and FUN make for a wonderful retreat. Become a Wild Women at Lutheridge!

Onsite: \$223; Commuter: \$210



### EQUIP High School Leadership

February 15-17, 2019

Energize! Question! Understand!

Intercede! Proclaim! This event is for students who are ready for more than the average youth event. They will explore theological issues, discern their gifts for leadership and be challenged! Adult leaders and/or parent chaperones are welcome to join us and stay in Kuehner Center motel style rooms. Counselors and event staff will lead camp activities and cabin time.

Youth: \$130; Adult: \$95 \*Early Bird



### Master Builders

February 22-24, 2019

Like working with your hands? Join us while we do big and small projects to improve Luther Springs, enjoy the lake, tell stories around the campfire, enjoy a healthy competition through camp games and sit on the back porch talking about our faith. Leader: Steven Helm

\$115



### Handbell Workshops

Feb 22-24 and March 1-3, 2019

Two opportunities for individual ringers or entire choirs to gain skills for their home ministries. Renowned clinicians share skills and inspiration. Choirs will leave with pieces that can be used in their own congregation.

Feb 22-24: Intermediate – David Harris, Advanced –

Fred Gramann

March 1-3: Intermediate – Fred Gramann, Advanced –

David Harris

Please note that the clinicians are the same for both weekends, but switch tracks.

Onsite: \$260; Commuter: \$210



### Women's Wellness Weekend

March 1-3, 2019

Take some time for yourself and let us take care of you! We will focus on taking care of ourselves physically, spiritually, and mentally. Enjoy fellowship, Bible study, and wellness opportunities like Yoga, Aroma Touch Therapy, Hiking, DIY Bath Salts, Essential Oils 101, and time with your sisters in Christ!

\$205



### Quilting Retreat

March 4-8, 2019

Spend a week with other quilters in a relaxed atmosphere. Teachers will assist with projects, as well as answer questions regarding different techniques. Quilters may work on provided projects for gift ideas & to benefit non-profits, as well as their own projects. There will be a day trip to a local quilt shop and the opportunity to share some of your own creations!

\$370



### Grands Weekend

March 8-10, 2019

GRANDPARENTS & GRANDKIDS, join us for a GRAND WEEKEND enjoying a time of spiritual growth and fun. Each day includes regular camp activities, cookie baking, worship, Bible study, exploring creativity, sharing stories, growing together in Christ and family free time. Children may stay with grandparent(s) in motel-style room or in a cabin with a Luther Springs counselor.

Adult: \$105; Youth: \$70



### Parenting In The 50Forward Years: Parenting Our Parents & Parenting Adult Children

March 22-24, 2019

Join others in the late career/early retirement years to find support and information for parenting challenges. Two tracks, each led by a professional counselor, will offer advice and resources for those struggling with parenting their parents or unsure how to best parent adult children. Choose the track that fits your needs, then come together for worship, fellowship – and refreshment in God's creation.

\$230 per person (2 nights/4 meals)



### God Spa for Women

April 5-7, 2019

Soak in the beautiful scenery and solitude of Luther Springs, relaxing your mind, body, and spirit. Activities may include: faith filled conversation, devotions, music, journaling, guided meditation, relaxing, and spa-type activities such as facials, manicures, pedicures and massages.

Single occupancy: \$230; Double occupancy: \$180, Cabin: \$155



### Exploring Transitions, True to Myself

April 18-20, 2019

First of a four-part retreat series sponsored by Portico Benefit Services. While everything seems to be changing within and around us, we seek to determine our true nature. In this retreat, we will explore our whole unbroken selves amidst our life stories, which we offer up freely and joyfully to the world. Designed for rostered leaders, but open to anyone in the midst of a life transition. Whether that be retirement, new call, divorce, loss of a loved one or emotional distress. Whatever your transition, come away to Luther Ranch to listen, discern, and connect with God and others in transition. The retreat offers the rhythm of liturgy that includes music, scripture, poetry, and time for individual and small group reflection within a sacred, safe space. Participants are invited to pause, listen and gain clarity.

Private Room: \$425; Double: \$350; Transportation: \$50



### Create In Me

April 25-28, 2019

Give creativity larger space in your life. Explore the FRUITS of the SPIRIT through music, words, paint, movement, fabric, drums, paper, clay, and more! Inspiring Bible study by NC Synod Bishop Tim Smith and creative worship are highlights of this retreat. Learn from artists excited to share their skills with you. No experience is needed! Let God create in YOU!

Onsite: \$310; Commuter: \$210



### 50 Forward Backpack Trip

April 25-28, 2019

An adventure designed for those 50+. Includes 2 days of hiking on beautiful trails and 2 nights camping – plus 1 overnight at camp. Here's a chance to enjoy nature at its finest with folks your own age. Beginners welcome. Finish the expedition with a celebration meal, plus a toast and a soak in natural hot springs. See 50Forwardlife.org for packing list and description of trail.

\$249



### Respite in the Wilderness

April 30 – May 2, 2019

A gift from NovusWay to the rostered ministers and church professionals of the Florida-Bahamas Synod. Enjoy a retreat of rest and renewal through prayer and study.

\$100



### Theology on Tap Weekend

May 3-5, 2019

Join us for a weekend of Craft Brews and the GOOD NEWS! Pastors Andrea and Kyle Bates will lead us in Bible study as we visit some local breweries which could include Blowing Rock Ale House, Lost Province Brewing Company, Appalachian Mountain Brewery, Flat Top Brewery, Beech Mountain Brewery, and Blind Squirrel Brewery. Lutherock staff will provide transportation for the brewery tour. (Bring money for brews and Saturday dinner.) Each participant will receive a Lutherock pint glass.

\$210



# Magnitude Of Gratitude

RidgeRock Builders • Ranch Builders • Friends of Luther Springs

**Builders/Friends** contribute \$500 or more annually. **Master Builders** give \$1000 - \$2499, **Cornerstones** contribute \$2500 - \$4999, **NovusWay Champions** provide support of \$5000 - \$9999, and **Keystones** make annual gifts of \$10000 - \$24999. **Foundation Builder/Founders Circle** donors contribute \$25000 or more annually. The following donors have attained their gift levels from January 1 to March 31, 2018. Please note that the list does not include those who contributed to Standing on the Promise, Complete the Dream or Mission Possible Campaigns.

## Ridge Rock Builders

### Cornerstones

Mr. and Mrs. Bert. J. Blood  
Mr. and Mrs. Robin Bryan  
Mr. and Mrs. Mark Glaeser  
The Rev. P. Shannon Mullen and  
Ms. Kami Kinard  
Ms. Rachel Quesada

### Master Builders

Mrs. Jean W. Blount  
Mr. and Mrs. Frank Chapman  
Mrs. Ann K. Dasher  
Mr. and Mrs. Todd Johnson  
Ms. Mitzi McLean  
Mr. and Mrs. Larry Moeller  
The Rev. and Mrs. Don Poole Jr.  
Mr. and Mrs. Glenn C. Shoaf  
Mr. and Mrs. Robert L. Thornburg  
The Rev. Mike and Hannah Ward

### RidgeRock Builders

Ms. Nancy C. Bremmer  
Dr. and Mrs. O. M. Cobb  
The Rev. Dr. and Mrs. Carl M. Fisher

Mr. and Mrs. Boyd W. Harris IV  
Mr. Norman Hilmer  
Tom † R. and Ruth † Martin  
Mr. and Mrs. Christopher A. Mendola  
Mr. and Mrs. John T. Mims  
The Rev. Ronald G. Smith Sr. and sons  
The Rev. Dr. and Mrs. William B. Trexler  
Mr. and Mrs. Joseph Turner-Barrett

CORRECTION: Our apologies to Mr. and Mrs. Duane A. Youngdahl who were accidentally omitted from the 2017 donors list under the RidgeRock Builders.

## Ranch Builders

### Cornerstones

Dr. and Mrs. Walter A. Carpenter

### Master Builder

Mr. and Mrs. John Schuerholz

### Builder

Mrs. Lois Luther  
The Rev. and Mrs. Darrel Peterson  
Mr. Ron Prater and  
Mrs. Arolue Flemmen Prater

Mr. and Mrs. Robert W. Schmechling  
Mr. and Mrs. Daniel J. Vesper  
The Rev. and Mrs. Dwight C. Wessinger

## Friends of Luther Springs

### NovusWay Champions

Mr. and Mrs. John Bentz  
Mr. and Mrs. Joel Best  
Mr. and Mrs. Kent Richter

### Master Builder

Mr. and Mrs. Don Armagost  
Mr. and Mrs. Randall C. Holm  
Ms. Barbara A. Neiman  
Mr. and Mrs. Joel Rentz  
Ms. Nancy Vause  
Mrs. Yvonne Will

### Friends of Luther Springs

Ms. Patricia Bettice  
Ms. Rosemary Peitz  
Mr. and Mrs. Steve Schenk  
The Rev. and Mrs. Thomas Unrath

† Deceased

# Memorial Gifts

The following memorial gifts to the annual fund were received between January 1 and March 31, 2018. The lists are constructed in alphabetical order by the last name of the person memorialized. Memorial gifts to campaigns will be listed in special publications at the conclusion of each campaign.

### Virginia R. Aull

Mr. and Mrs. D. Laverne Mattox

### Dr. Vivien Casagrande

Ms. Elizabeth McKanna

### Barney and Catherine Chapman

Mr. and Mrs. Frank Chapman  
Mr. and Mrs. James Edwards

### Lois Kibler

Billy and Libby Bedenbaugh

### The Honorable J. Ernest Kinard

The Rev. P. Shannon Mullen and Ms. Kami Kinard

### Barry Luther

Lois Luther

### Elise Bedenbaugh Martin

Billy and Libby Bedenbaugh

### Janet Powell

Mr. and Mrs. Jerry A. Butt  
Mrs. Barbara Huepenbecker

### Al and Hazel Printz

Ms. Lou dell Printz and Mr. Dennis Fowler

### Dale Rasmussen

Mr. and Mrs. Kenneth J. Anderson  
Mrs. Muriel Johnson  
The Rev. Dr. and Mrs. John L. Setzler

### Louise Sink

Mr. Bob Sink

### Helen Smith

The Rev. Ronald G. Smith Sr. and Sons

### Helen Ann Such

Mrs. Muriel Johnson

### Dorothy Trexler

The Rev. Terry W. Agner and  
Ms. Nancy Bourne  
The Rev. Dr. and Mrs. William B. Trexler

# Honor Gifts

The following honor gifts to the annual fund were received between January 1 and March 31, 2018. The lists are constructed in alphabetical order by the last name of the person honored. Honor gifts to campaigns will be listed in special publications at the conclusion of each campaign.

### Deena Bedenbaugh

Libby and Billy Bedenbaugh

### Billy and Libby Bedenbaugh

Mr. and Mrs. G. Roscoe Bedenbaugh  
The Rev. and Mrs. Dwight C. Wessinger

### Libby Bedenbaugh

Mr. and Mrs. Virgil Leaphart  
Dale and Becky Maxwell

### Martha Haigler

Brigadier General Janice M. Haigler

### Keith Johnson

Dale and Becky Maxwell.

### Adam, Amanda and Matthew Kelley

St. Michael's Lutheran Church, Columbia, SC

### The Marriage of Ben Moravitz and Leigh Lyjak

The Rev. and Mrs. Darrell Golnitz

### Laura Bedenbaugh Vannoy

Billy and Libby Bedenbaugh

### Stephen and Patricia Winemiller – Wedding Anniversary

Deborah J. Carpenter



## Thanks for Your Help!

An appreciative thank you goes out to the 20 to 30 women who meet twice a year for a Scrap Camp Retreat at Lutheridge under the leadership of Liz Propst. This group has been meeting for over 12 years and the friendships, fellowship, and fun they have had has been a wonderful blessing. Over all these years they have contributed many dollars to scholarships with their offerings from Sunday Worship. For the last several years they have contributed to the Lutheridge Bookstore dollars, to be shared with campers who arrive with no funds to purchase something when they visit the store with their cabins.

This spring, group member, Ranate Patrick, applied for and received a Thrivent Action Grant. With that \$250 seed money, they purchased new easy-to-carry boxes to hold all the Bible Study supplies for the Care Leaders at Lutheridge. The Thrivent seed money was multiplied many times by the generous donations of all the retreaters. A list of needed donations was shared with everyone in the group on Facebook and members signed up for what they would donate. When they arrived at camp, the old supplies were inventoried and hundreds of colored pencils were sharpened!! Items still needed were posted for all to see and folks visited area stores to purchase the needed donations. Anyone who wants to know more about Scrap Camp can search Facebook for Lutheridge Scrap Camp and request to join the group.



Also, any Thrivent member can apply for these \$250 Action Grants through Thrivent.com. Let your generosity and creativity shine through! If you would like ideas for projects that can be used by our camps, contact Margo Rabon, [mrabon@novusway.org](mailto:mrabon@novusway.org) or Lori Bode, [lbode@novusway.org](mailto:lbode@novusway.org) or 828-684-2361.

## Thornburg Legacy

The Thornburg Legacy encourages and recognizes generous individuals and families who wish to perpetuate the mission of NovusWay by means of a planned gift, which may mean designating a portion of their will to NovusWay, naming NovusWay as beneficiary to a life insurance policy, establishing a Charitable Gift Annuity with NovusWay as beneficiary or any other gift that comes to NovusWay after death. The following individuals and families are members of the Thornburg Legacy.

The Rev. Craig and Mrs. Ginny Abee  
Mr. David C. Backus, Sr.  
Libby and Billy Bedenbaugh  
Nancy Boccadoro  
Richard and Sheryl D. Breitmoser  
Mrs. Evelyn Brittingham  
Christine Boe Brooks †  
Mark and Sandy Brosch  
Robin and Carol Bryan  
Mr. and Mrs. Steven Calcutt  
Dr. Walter and Amy Carpenter  
The Rev. Marion W. and Mrs. Edith Clark  
Edna Corley †  
E. Ruth Counts  
The Rev. Robert † and Mrs. Ann Dasher  
Mr. Ralph † and Mrs. Mary † Deal  
Mr. and Mrs. John Didicher  
Mr. John Didicher, Sr. †  
Mr. and Mrs. John J. Dress, III  
Mrs. Carol Ernst †  
Mrs. Velma H. Eberly †  
The Rev. Eric Fink  
Mr. Meridan E. French  
Sarah Frey †  
Pastor Jay and Tia Gamelin  
Mrs. Doris C. Gehring †

Miss Miriam E. Gnann †  
Mr. † and Mrs. † W. Sidney Gnann  
Mr. and Mrs. Robert L. Gobble, Jr.  
The Rev. Darrell and Mary Gelnitz  
Betty Goodwin †  
Deems Haltiwanger †  
Onie Fulmer Haltiwanger †  
Terry and Lori Halvorson  
Donna Hanna  
The Rev. Terry Park Hannon  
Dr. Edward † and Vickie Hauser  
Clara Hawkins †  
Chris Hegele  
J. Stephen and Beverly Henderson  
The Rev. Scott and Sandra Holland  
The Rev. David and Jo Ann Hood  
Mr. Walter † and Mrs. Carolyn Hooker  
Mr. John E. Hughes †  
Art and Ginny Hultquist  
Rev. Dr. Harvey, Sr. † and Mrs. Lucy † Huntley  
Alan and Dawn Hyatt  
Mrs. Mary S. Jahnsen †  
Mr. and Mrs. Milton D. Jellum  
Dr. Harrison † and Mrs. Ruth † Jenkins  
Mr. and Mrs. Marty Jenkins

Keith and Lori Johnson  
The Rev. Dr. and Mrs. David R. Keck, Sr.  
Ms. Mary W. Kehl  
Mrs. June Kemp  
Porter and Amelia Kinard  
Mr. † and Mrs. † Robert T. King  
The Rev. Voigt † and Marie W. Kleckley  
Robert † and Edna Kluttz  
Mr. Hal Kohn Jr. † and Charlotte † Kohn  
Linda Lael  
Odell Laffon †  
Inez LaSalle †  
Russell and Elisabeth Lentz Foundation  
Georgia Livingston †  
Anna Lohmann †  
Mrs. Peggy Mann  
Mr. and Mrs. Fred Mappus  
Mr. C. Allen and Judy Moen  
Imogene E. Myers †  
Mildred F. Miller †  
J. V. Mills †  
The Rev. Dr. Bill and Sherry Mims  
Mr. and Mrs. Larry Moeller  
George Moretz  
Mrs. Imogene E † Myers.  
Mr.† and Mrs. † Ron Neubert  
Mr. and Mrs. Merle A. Parker  
David and Ranate Patrick  
The Rev. Darrel and Mary K. Peterson  
Charlotte L. Petty  
Mrs. Arthelia Phillips †  
The Rev. and Mrs. Donald R. Poole  
Donald Wade and Janet Poust  
Pastor John and Liz Propst  
The Rev. Dr. Shirley M. Redmond  
Mrs. Debbie Reid  
Ross † and JoAnne H. Ritchie  
Mr. Claude and Mrs. Annemarie Roberts  
Ms. Mary Alice Rutherford  
Robert A. Sain  
Mary Riser Schaeffer  
Jason and Mitzie Schafer

Steve and Sandra Schultz  
Mrs. Evelyn C. Segelken †  
The Rev. Dr. John L. Setzler  
Allison Furman Sewrey  
The Rev. and Mrs. C. Pierson Shaw  
The Rev. Wallace Shealy  
Mrs. Juanita Sigmon †  
John and Linda Simon  
The Revs. George L. and Martha M. Sims  
The Rev. Mary L. Sitton  
Mr. Gus and Mrs. Frances † Stavros  
The Rev. Kevin L. Strickland  
The Rev. Dermont Swicegood†  
The Rev. and Mrs. G. David Swygert  
The Rev. Luther Swygert †  
Mrs. Anna Teitelt†  
Katherine Theiling †  
Freeman Thomas †  
David and Susan Troutman  
Mr. † and Mrs. † Ernest M. Troutman  
Mr. Robert L†. and Mrs. † Margaret Troutman  
Vincent J. Vierling †  
Warren H. and Miriam O. Walka  
The Rev. Mike and Hannah Ward  
Maud Weber †  
Herman Wessinger †  
Ralph Wessinger †  
Mr. Lee† and Mrs. Jean White  
Richard and Cathy Whittecar  
Mr. Dennis and Mrs. Jeanne Wieckert  
John† and Louise William  
Mr. Guenther (Chris) † and Mrs. Christa Wunderlich  
Mrs. Wilma G. Wygant †  
Three (3) Anonymous

† Indicates those donors whose gifts are already working to provide support to NovusWay Ministries. For more information on planned giving, contact Keith Trout, Development Director, [kt trout@NovusWay.org](mailto:kt trout@NovusWay.org) or 864-313-1453.



*The Lutheran Outdoor Ministry Executive Directors were recently welcomed at Lutheranch for a retreat from April 23 – 26. There were 37 guests in attendance. LOM Executive Director, Don Johnson, remarked “Accommodations and service here at Lutheranch – excellent.”*

# Cousins Reunite At Lutheridge



Wild Women Weekends are well attended by many women with stories to tell. This year marked a reunion that seems unique – “A Cousins’ Weekend”. Ruth Smiley attended in 2017 and the idea began that several women cousins could meet there in 2018. Her cousin Ina had told her how much she enjoyed Wild Women’s Weekends in earlier years. Thus, the planning began and the result was that all the women cousins of the Crumley grandparents who had lived in Bluff City, TN came to the Wild Women Weekend on March 16, 2018. Their cousin Bob Hughes and his wife, Judy, from Matthews, NC joined them for a visit on Saturday afternoon. The cousins had a rare opportunity to reminisce and share family news, as they are aware they see one another all too infrequently and mostly at funerals in recent years. They were thankful to be able to share this weekend of inspiration, stories and memories.



*A Cousins Reunion*

*Pictured from left are Fran Holman, Towson, MD; Bob Hughes; Ruth Smiley, Oak Ridge, TN; Ina Berkey, Williamsburg, VA; and Mary Hughes from Columbus, OH.*

NONPROFIT ORG  
US POSTAGE  
PAID  
ASHEVILLE NC  
PERMIT #575

**NOVUS WAY, INC**  
28 SPRUCE DRIVE  
ARDEN, NORTH CAROLINA 28704  
Change Service Requested



*NovusWay Board members are pictured from left, Kevin Wicker, Walterboro, SC; The Rev. Gregory Williams, Hendersonville, NC; Katherine Till, Mt. Pleasant, SC and The Rev. Joe Glymph, Clearwater, FL as they were honored at the March meeting of the Board of Trustees. They all have served faithfully on the board for six years and their terms will end on June 30. They were presented with a framed print of the four sites that comprise NovusWay that was created by former board member and artist, Joanna Britt.*

**REGISTRATION IS OPEN FOR  
WILD WOMEN WEEKENDS IN 2019.  
GATHER A GROUP AND SIGN UP TODAY!  
SEE INSIDE FOR DETAILS.**

## THE LINK

The LINK is published 3 times per year by NovusWay Ministries. Standard postage paid at Arden, NC. Postmaster: Please send address changes to: The LINK, 28 Spruce Drive, Arden, NC 28704.

### NOVUS WAY BOARD OF TRUSTEES

#### Florida/Bahamas Synod

The Rev. Joe Glymph, Todd Johnson

#### North Carolina Synod

Gwen Glaeser, The Rev. Gregory B. Williams

#### South Carolina Synod

The Rev. Susan J. Crowell, Kevin Wicker

#### Southeastern Synod

The Rev. Dale A. Sillik, Mary K. Peterson

### At Large

Dr. Everett Flanigan,  
Susan Lee, Katherine Till,  
Larry Moeller, Joel D. Rentz

### Bishops

The Rev. H. Julian Gordy  
The Rev. Dr. Timothy M. Smith  
The Rev. Pedro M. Suarez  
The Rev. Herman Yoos

### ADVANCEMENT STAFF

Sandra Holland, Development Associate  
Dale Nettin, Development Associate  
Debbie Lundell, Special Events Coordinator  
The Rev. Jan Setzler, Co-Development Director  
Keith Trout, Co-Development Director

### PROGRAM STAFF

The Rev. Mary Canniff-Kuhn, Lutheridge Program Co-Director  
The Rev. Tim Canniff-Kuhn, Lutheridge Program Co-Director  
Sue Mendenhall, Luther Springs Program Director  
Kara & Jacob Ridenhour, Lutherock Directors

### OTHER STAFF

Boyd W. (Bo) Harris IV, Executive Director, CEO  
Becky Maxwell, VP Finance & Support Services  
Margo Rabon, LINK Editor  
Craig Rieger, VP of Sites & Facilities

NovusWay is owned and operated by the Florida-Bahamas, NC, SC, and Southeastern synods of the Evangelical Lutheran Church in America and serves all ages from the SE USA. Its camp and conference facilities are Lutheridge, 160 acres in Arden, NC, known for its summer camp and year-round ministry programs; Lutherock, 762 acres on Sugar Mt., near Newland, NC, known for its rugged, outdoor adventure ministry, Lutheranch, 519 pristine acres in Tallapoosa, GA and Luther Springs' 350 acres on the shores of Lake Vause in Hawthorne, Florida.