

THE LINK

YOUR CONNECTION TO WHAT'S HAPPENING AT

SPRING 2017 | Vol LXXV No. 2, May 2017



A Testimony to the Essential Ministry of NovusWay

A Mother's Perspective on the Value of NovusWay Summer Camps

The night of March 18 was horrific for the Fontana family, but even the brutality of that night could not suppress the grace and love of God. Their oldest son, Mario, a junior at Florida State University, had been out with friends. As the group dispersed, he found himself in a parking garage needing to contact Uber for a ride home. Mario approached four young men for help. Instead they told him he had three seconds to run before they beat him, which they did,



Mario Fontana

stopping only when one told the rest to stop, fearing they would kill him. Somehow he got back to his apartment where friend and Luther Springs

and there were no broken bones or back problems. I was so angry that they could do this to my son. What motivates such a random act of brutality?"

Amy and her husband called the police, who arrested the four predators because of video cameras in the parking garage. They are currently awaiting trial.

As the Fontana family works through this horrific incident and as Anthony and Amy deal with their anger over what happened to their son, it is Mario who has encouraged them to forgive his attackers; "I forgave them. You need to forgive them." Amy exclaimed, "Praise God, this is what I would want my son to say, but I am a flawed human being. I pray every night that God will change my heart, but it is so hard to forgive them."

Amy credits Mario's time at NovusWay for the depth of his Christian faith and his ability to forgive his attackers. She exclaimed, "I want you to know how absolutely essential the work of NovusWay is. Please tell the board and all the others. Letting our children go into the world without us is hard. We want to protect them, but we know we must prepare them as best as we can and surround them



Mario and his mom, Amy



Mario Fontana playing guitar

You are invited to experience the benefits of a NovusWay camp this summer - Lutheridge, Lutherock, Luther Springs and Lutheranch. Check out a full array of programs at www.NovusWay.com or call **828-684-2361** for more information. To register go to <https://www.NovusWay.campbrainregistration.com>. **Two weeks of summer camp are offered at Lutheranch for the first time ever!** June 18-23 for grades 1-5 and June 25-30 for grades 6-8 and confirmands.

Continued on page 3



\$100,000 Challenge Gift Offered to Complete the Dream for Lutheranch

Johnny & Kristen Evans, Cameron, South Carolina, recently extended a \$100,000 challenge to other donors to help complete funding for the McKanna-Sandrock Retreat Center at Lutheranch. Once \$100,000 in new commitments for the “Complete the Dream” Campaign are made, the Evans will make their \$100,000 gift.

Johnny & Kristen are long-time friends of NovusWay. Kristen grew up attending Lutheridge and their former pastor, the Rev. Bob Young, helped to establish a campfirmation cluster at Lutheridge. Johnny previously served on the Board of Trustees and chaired the major gifts effort for the Foundations for Faith Campaign in South Carolina. The Evans currently serve as members of the NovusWay Council of Champions.



Johnny and Kristen Evans with Grandchildren

Johnny is the president and CEO of C.F. Evans, a construction company that builds college dormitories, apartments, and retirement communities throughout the southeastern U.S. When NovusWay formed a Construction Team to oversee building the multiple use retreat center at Lutheranch, Johnny hosted the team at his business and home to get them started. The Evans offered the \$100,000

challenge because they are eager to see the retreat center be debt free when it begins serving guests and campers this summer.

The “Complete the Dream” campaign for Lutheranch was launched in winter 2016 with the goal of raising \$1 million to fully fund the retreat center construction. In response to the Evans challenge, another donor from South Carolina made a \$30,000 pledge and a donor in Birmingham committed \$15,000. This reduces the total needed to fully fund the retreat center to \$95,500, which includes start-up operating costs for the first 30 months and interest on a construction loan while donors complete their pledges over the next 3-5 years.



Keith Trout

If you would like to make a gift to raise the remaining \$24,500 needed to reach the \$100,000 Evans challenge, contact Keith Trout Development Director, at kt trout@NovusWay.com, or call 864-313-1453.

Lutheranch Update



As this edition of the LINK newsletter went to press, the general contractor indicated that the McKanna-Sandrock Retreat Center was on target to be completed by June 1, 2017. The following dates are key events at Lutheranch this summer.

June 8-11. Move In Dates. Volunteers are requested to help staff move and assemble furniture to the new retreat center. Contact Angie Yates to reserve a room; ayates@NovusWay.com. Limited overnight lodging is available in the Holy Trinity House.

June 18-23 – Camp Week for Grades 1-5 and June 25-30 – Camp Week for Grades 6-8/Confirmation Camp. To register go to <https://www.novusway.campbrainregistration.com> or call 828-684-2361.

August 5 – Dedication of the McKanna-Sandrock Retreat Center begins at 11:00 am. Lunch follows with water sports and site tours in the afternoon.

August 19 – 2nd Annual Happy Trails Gala to raise funds to operate



Guests enjoy the 2016 Gala

Lutheranch and purchase program equipment. Contact Debbie Lundell for more information at debrallundell@comcast.net and contact Margo Rabon at mrabon@NovusWay.com for registration information.



Holy Spirit Lutheran Church, Juno Beach, Fl Honors Pastor Frank & Martina Wagner

The primary project of the Mission Possible Campaign for Lutherock is to purchase the property at the entrance to the camp. Until recently, NovusWay didn't own the land and entry was permitted through an easement. The “creek crossing” is the sole entrance, and when it became available for purchase, the Board of Trustees stepped out in faith to purchase the land from two sisters who offered the land at favorable terms.



The Wagner Family

All of this was unknown to the Wagners. It was truly a labor of love by the congregation members in this country and friends abroad. They not only met the goal, but as this news release was being published, gifts had grown to over \$140,000!

A video that announced the gift was played near the end of the first Palm Sunday worship service at Holy Spirit Lutheran Church, and it caught everyone but the planners by surprise. The video was taken at the entrance (creek crossing) to Lutherock, and it featured the Rev. Jan Setzler, Mission Possible Campaign Director, and Keith Johnson, NovusWay Executive Director. Johnson spoke directly to Frank and Martina, “*I am pleased to tell you that there will soon be a new sign by the entrance where we are standing that will welcome campers and guests to Lutherock. The sign will proudly dedicate this beautiful part of God's creation in honor of Pastor Frank and Martina Wagner. I can't think of two people who deserve this honor more.*”

Pastor Frank and Martina have brought hundreds of youth and adults to Lutherock for over 30 years. Frank has ridden his bike to Lutherock three times and has raised over \$100,000 for land acquisition and “Zip the Rock” to install a new zip line at the “saddle.” Wagner also served on the task force that developed a new master plan for Lutherock in 2004, and Martina, with her friend Diane, cooked delicious meals for several summers at Lutherock. Frank also served as a volunteer for the Mission Possible Campaign and had this to say, “*My family and congregations that I have served have gone to and supported Camp Lutherock every year for 30 years. At Lutherock, we are transformed by the beauty of God's magnificent creation and the love of God's amazing people.*”

As this edition of the LINK newsletter went to press, \$1.9 million had been received in commitments toward the \$2.365 million campaign goal. If you would like to make a gift to help purchase land at Lutherock or support the Mission Possible Campaign, contact the campaign director, Jan Setzler, at jsetzler@NovusWay.com, or call 864-942-2974.



Pastor Frank and Martina Wagner



Jan Setzler

Retreat Center Dedication

SAVE THE DATE

Saturday, August 5

11:00 am – Dedication service. Everyone is invited.

1:00 pm – Cookout

2:00 pm – Lake activities and site tours

REFLECTIONS OF THE EXECUTIVE DIRECTOR



“My Life has been Enriched Beyond Measure”

Dear Friends and Partners in Ministry,

It's hard to believe that nearly 24 years have passed since I began serving as Executive Director in January 1994 for what was then Lutheridge+Lutherock Ministries. Since that time my life has been enriched beyond measure through service with thousands of friends of NovusWay across the southeastern U.S. What a joy it has been to share in ministry with you!

As I reflect back on 24 years, I am proud and humbled by all that we've accomplished together through the blessing of the Holy Spirit. Some of the highlights for me are developing a culture where all are welcome at our camps regardless of the ability to pay, reaching out to crosscultural people so they feel welcome at our camps, growing Lutherock to 750 acres and entering into a conservation easement, developing extensive year-round and adult programs at Lutheridge, developing outdoor schools at Lutherock and Luther Springs, launching Lutheranch, and grafting Luther Springs to the NovusWay family. I have been privileged to serve with superb staff partners, and extremely capable and committed board and committee members, volunteers, and donors.

That being said, after much prayer and discernment, I will be retiring as Executive Director for NovusWay Ministries early in 2018.

I have been working closely with the Board of Trustees on succession planning. The board has appointed a Search Committee, and their names are included in this issue of the LINK newsletter. The board is retaining an executive search firm to assist in identifying candidates for the position. The plan is for the Board of Trustees to select a candidate at the November 2017 board meeting with the new Executive Director beginning early in 2018.

"I am convinced the best days for NovusWay are ahead"

I have every confidence in the search process that the board has put together, and NovusWay is blessed with outstanding staff and program leadership to carry out the ministry and programs. I am convinced that the best days for NovusWay are ahead, and I urge your continued commitment and support to the ministry. Lori and I plan to retire in the Hendersonville, North Carolina community and we will continue to support NovusWay in any way that we can.

What a joy and privilege it has been to serve with you!

Continued from page 1

A Testimony to the Essential Ministry of NovusWay

with people we trust to help us. We're good parents, but Lutheran camps have been vital to our sons' faith formation and growth as young Christian men. That's why we've sent them to NovusWay camps from the time they were six years old."

Mario and his younger brother Joe first attended Lutheridge in grade school. In middle school they participated in high adventure camp at Lutherock. After moving to Florida, they attended Leadership Lab, a high school leadership training program at Luther Springs. Mario and his brother Joe have served as Luther Springs summer staff for five summers and Mario will serve as Assistant Summer Camp Program Director this summer.

Amy herself is a regular volunteer at Luther Springs, "I also appreciate being part of the Christian camp community. God is here at Luther Springs. Both

From Larry Moeller - President, Board of Trustees:

A couple years ago, Keith Johnson approached the Board of Trustees about the best timing for his retirement and leadership succession.

In time, and with Keith's encouragement, that casual conversation led to intentional planning. The Planning & Review committee crafted a succession blueprint; it was received and endorsed by the Board nearly a year ago.

A widely held theory in organizational development is that future results can best be predicted from past performance. And so, as part of the blueprint, last spring a broad base of stakeholders throughout the Southeast (comprised of full- and part-time staff, summer counselors, campers, donors, pastors, youth leaders, etc.) were invited via SurveyMonkey to offer their assessment of Lutheridge, Lutherock, and Luther Springs. The results were gratifying. The respondents were also invited to think ahead - to dream boldly about what the future might hold for NovusWay. The results were exciting.

To a person, the members of your board feel privileged to stand on the shoulders of those who have gone before - on the shoulders of faithful and dedicated staff, and on the shoulders of those who have entrusted all of us with their gifts of time and treasure. God has, indeed, richly blessed these ministries.

An early component in the succession blueprint is the timing and selection of a successor to the Executive Director

In his Reflections of the Executive Director, Keith's words are characteristically self-effacing. Indeed, an executive search firm has been retained. And the work of the Search Committee is underway, comprised of: Amy Carpenter - Atlanta GA; Don Doctor - Cramerton NC; Todd Johnson - Apollo Beach FL; Maggie Lohr - Raleigh NC; Laura Mallette - Dandridge TN; Tom O'Reilly - Tampa FL; Bishop Tim Smith - Salisbury NC; Erin Titus - Newberry SC; Camille Trott - Sharpsburg GA; and Gwen Glaeser, chair - Charlotte NC. The committee is eager to receive your input as the process unfolds. Please share your thoughts with Gwen ... gwenglaeser@gmail.com ... and she will make sure the committee receives them.

Through the summer and into the fall, candidates will be identified and vetted with the expectation of the board selecting a successor in the latter part of 2017 so that Keith's (and Lori's) desire to plan for retirement in early 2018 can be honored.

The Search Committee and the board cherish your prayers and encouragement. Blessings to you in this season of New Life.

Christ is risen, indeed!

Larry Moeller



my sons are working with me this weekend at God's Spa Retreat for women. It's a testimony to the ministry that two college students will drive three hours to help lead a retreat for women."

Amy concluded by saying, "The ministry of NovusWay is vitally important. You've stayed the course and you are true to your mission. My family is in your debt."

If you would like information on how your child(ren) or grandchildren can attend camp this summer go to <https://www.NovusWay.campbrainregistration.com>.



Mario helping with archery



WWW.NOVUSWAY.COM
828.684.2361



Founders Challenge

Commitments to the Founders Challenge Campaign reached \$124,000 by mid-April. The purpose of Founders Challenge is to raise \$150,000 to purchase 19.3 acres of property known as the “knob above the saddle” at Lutherock. The “saddle” is one of the most picturesque areas at the camp and is the site that hosts the LDR (Life, Death and Resurrection of Jesus) pageant and the 50’ Alpine Climbing Tower. Three founding North Carolina congregations of Lutherock are conducting the campaign including St. Marks, Claremont; Mt. Zion, Conover and Old St. Pauls, Newton. If you would like to make a gift to Founders Challenge to help purchase the “knob above the saddle”, contact Keith Trout, Development Director at kt trout@NovusWay.com or call 864-313-1453.



Keith Trout



The Pauline Schmertmann Wing (pictured above) is taking shape thanks to the great work of Mission Builders who have converged on Luther Springs from all across the country with workers from Wisconsin, Minnesota, Missouri, South Carolina, Texas, and Florida. Gary Klein, General Contractor, indicated that the Wing should be completed by early July 2017, and Sarah Anderson is already booking the facility for guests after August 1. Contact Sarah at asarah624@gmail.com or call 352-546-5554 to schedule a retreat at Luther Springs. The Pauline Schmertmann Wing will be dedicated on September 9, 2017.



Jan Setzler

As this edition of the LINK newsletter was being printed, commitments to the Mission Possible Campaign had reached \$1.9 million. If you would like to help make expanded "Mission Possible" at Luther Springs or Lutherock, contact Pastor Jan Setzler, Campaign Director at jsetzler@NovusWay.com.

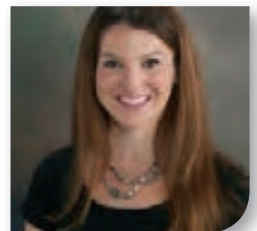
Laughing Matters



Research shows that laughter really is the best medicine. Laughter reduces stress, prevents heart disease, relieves pain, boosts immunity, eases conflict, creates community.. and more. 50Forward is a program emphasis serving active adults in the late career/early retirement stage of life. The Living Well retreat offers the opportunity for learning, fun, faith-building, in the midst of autumn mountain beauty. Come to this popular program at Lutheridge on October 6-8 and you will be treated to some excellent Keynote speakers.



Jessica P. Floyd, M.D. is a neurologist practicing in the Lexington/West Columbia, SC area. She will speak about brain health benefits and help you learn how to add joy and zest to your life and improve your health at the same time.



Jessica P. Floyd, M.D.



Scott Stantis

Scott Stantis is currently editorial cartoonist for The Chicago Tribune and creator of the internationally syndicated politically-themed comic strip, Prickly City. Stantis will help you laugh and challenge you at the same time.

Come early or stay late to enjoy all the adventures that Asheville and Western North Carolina have to offer. Go to www.50ForwardLife.com for more information on this retreat and other 50Forward programs.



Join Adam Hopkins in Giving Back To Lutheridge

Adam recently wrote, “I found out that there was a staff alumni fundraising campaign, and without any hesitation at all, I knew I would give back. Staff from years gone by have “grown up” and gotten “real” jobs, but hopefully have never forgotten their time at camp and what it meant to be a light for Christ and bring campers closer to God; we’ve moved away from each other, some of us have lost contact with old co-workers, but the memories have hopefully stayed with us.”



Staff alumni swimming pool

Adam has made a monthly automatic recurring commitment using his credit card to help install lighting for the new swimming pool at Lutheridge. Over \$11,000 has been committed toward the \$23,000 goal. Others are invited to join Adam by making a one-time gift, or through the automatic recurring commitment where \$5, \$10, or \$15 a month is automatically charged to your credit card or withdrawn from your checking account. If you would like to use this method of giving, please contact Margo Rabon at mrabon@NovusWay.com. If you would like to donate online, go to <http://www.novusway.com/donate-now/>, then click on “other restricted donations” on the right and designate your gift to “Staff Alumni Project” under Special Notes.



Adam Hopkins (Luther Springs 1999-2000, Lutheridge 2001-2002) with fellow camp counselors

Editor's Note: As this edition of the LINK newsletter was being printed, an anonymous donor offered a \$1,500 challenge to match all gifts up to \$1,500, made prior to summer camp 2017.

NONSUMMER OPPORTUNITIES

REGISTRATION IS OPEN AT
WWW.NOVUSWAY.COM OR CALL 828-684-2361



WHITEWATER WEEKEND at Lutherock August 25-27, 2017 AND May 11-13, 2018



Come remember your baptism as a youth group in this water-filled weekend! Chaperones are responsible for overnight supervision and transportation. You must be at least 10 years old to raft the Upper Nolichucky!
Cost: \$125.00/youth \$90.00/adult
whitewater rafting cost not included - \$60 per person
price increase for May weekend of \$2 person and \$5 rafting fee



ADULT WHITEWATER BACKPACK at Lutherock September 1-4, 2017 (Friday-Monday)



Enjoy an adventurous weekend at Lutherock! Rate includes lodging at Lutherock, meals from Saturday breakfast-Monday breakfast, backpacking equipment, and program leadership.
\$125 *rafting is an additional \$65*



GOD'S WORK OUR HANDS DAY at Luther Springs September 9, 2017 (Saturday)



Youth, men's and women's groups, congregations, families, individuals! Projects may include clearing trails, chopping wood, painting, cleaning, sorting and organizing, or a special building project. Our day of service will be Saturday, with lunch provided. Contact Sue Mendenhall for overnight accommodations suem@fbsynod.org (727) 415-9887!



GOD'S WORK OUR HANDS VOLUNTEER WEEKENDS at Lutherock September 8-10, 2017, AND May 4-6, 2018

There is always something to be done at Lutherock. All are welcome: youth groups, men's groups, women's group, congregations, families, individuals! Contact Jacob Ridenhour with questions: jridenhour@lutherock.com. Meals provided Saturday breakfast through Sunday Lunch. Housing in Cabins or Founder's Lodge.



GRANDS WEEKEND at Luther Springs September 8-10, 2017 (Friday-Sunday)

GRANDPARENTS & GRANDKIDS, join us for a GRAND WEEKEND enjoying a spiritual growth and fun. Each day includes regular camp activities, cookie baking, worship, Bible study, exploring creativity, sharing stories, growing together in Christ. Leaders: Rev. Dick Hafer, Margo Walbolt, Steve Helm, and Rev. Keith Walbolt
Adult: \$105; Youth: \$70 *Call Registration for discounted rates on cabin and campsite lodging!*



GOD'S SPA FOR WOMEN at Luther Springs September 15-17, 2017 AND April 27-29, 2018 (Friday-Sunday)

Activities may include: faith filled conversation, devotions, music, journaling, guided meditation, relaxing, and spa-type activities such as facials, manicures, pedicures and massages.
\$180 *Call registration for discounted rates on cabin and campsite lodging!*



Quilting Bee at Lutheridge September 21-24, 2017 (Thursday-Sunday)



Join renowned teacher Holly Anderson for a weekend of stitching fun. Bring your own project or create a wall-hanging of Holly's design. The retreat will also include daily devotions, a Trunk Show, Show & Tell, and optional field trips to fabric stores and the Folk Art Center.
\$265



FISHERS OF MEN at Lutherock September 22-24, 2017 AND April 27-29, 2018

Come to the mountains to enjoy the wonder of fly fishing. This men's retreat offers an opportunity to be in a place where God can teach about our faith through the mountain waters. A NC fishing license is required and can be purchased at www.ncwildlife.org. There will be a limited amount of basic gear available to rent.
\$220



FAITH ALIVE at Lutheridge September 22-24, 2017 Lord's Prayer and Apostles Creed November 3-5, 2017- Old Testament Overview

February 2-4, 2018- Holy Baptism and Holy Communion

April 20-22, 2018- 10 Commandments and Reformation

Lord's Prayer: Youth will pray each part of the Lord's Prayer in fun, creative ways which engage brain and heart and make this familiar prayer take on a new meaning

Apostles Creed: Learn the importance of saying "I believe" and meet each person of the trinity in new ways - up close and personal.

New Testament Overview: Discover how the New Testament Came to be, experience the central stories of Jesus' life and explore how Lutherans understand the New Testament as the WORD of God.

Holy Baptism: This retreat teaches the importance of sacrament in Lutheran worship. Youth will experience baptism as the sacrament of belonging. We are God's forever!

Holy Communion: The sacrament of Communion takes on deeper meaning as the meal of forgiveness, nourishment and community, central to Lutheran worship.

10 Commandments: Youth LEARN the Ten Commandments using pictures and stories that make their meaning relevant RIGHT NOW in an adolescent's life.

Reformation: Luther's life and reformation principles inspire youth to continue the reforming tradition by asking questions and keeping faith alive today!

Youth: \$184; Adult: \$97. Receive a \$30 discount by registering at least a month before the retreat.



PRACTICE DISCIPLESHIP RETREAT for youth workers at Luther Springs



September 28-October 1, 2017 (Thursday-Sunday)

Come to rest, re-energize, and reconnect with God and God's action in our lives! Thursday evening we will gather for a time of networking and hospitality. Friday is an all day intensive care course by Andy Root, PhD on Bonhoeffer as Youth Worker. Sat/Sun, we will offer workshops geared to equip you in your ministry to children and youth. Register for just one day or all four! To register, go

to www.FBSynod.com/Youth.

Motel: **\$80 +25** each extra night; Cabin: **\$65 +25** each extra night; Prices increase by **\$25** 1 month prior to the event



FALL FESTIVAL at Lutherock October 6-8, 2017 (Friday-Sunday)

Come to the mountains for a weekend of fall fun and adventure! If you can't come for the weekend, come for a day of fall fun on Saturday!

Adult: \$110; Youth: \$60

Save 50% as a commuter!



50Forward Living Well at Lutheridge October 6-8, 2017 (Friday-Sunday)

This year's LIVING WELL retreat focuses on HUMOR. Research shows that laughter really IS the best medicine! Gather a group of your

50Forward friends and come to explore the POWER and PROMISE of this amazing gift of God. Come early or stay longer to enjoy all the adventures the area offers. See area attractions and get more information about the retreat at www.50forwardlife.com

\$249; 5 or more: \$200; Commuter: \$175



FREE YOUTH MINISTRY TRAINING at Lutheranch October 13-14, 2017 (Friday-Saturday)

Join Rachel Alley, Assistant to the Bishop for Young Adults and Youth, for an overnight retreat of networking and workshops on youth ministry that you will be able to use right away in at home. Space is limited. Register online at <http://www.sesyouth.org/equipping-adults.html>.



FALL 2017 AND SPRING 2018 PROGRAMS

TO REGISTER CALL 828-684-2361
OR WWW.NOVUSWAY.COM



FAITH JOURNEY CONFIRMATION RETREATS at Luther

Springs

October 6-8, 2017 AND
January 12-14, 2018

Bring your confirmation class to Luther Springs and let us do teaching. Luther Springs' counselors guide campers through the weekend including worship, Bible Study, campfires, games, canoeing, archery, swimming, hiking and more!

Youth: \$164; Adult: \$95 *Receive a \$30 discount by registering at least a month before the retreat*



the
will



GOD'S SPA FOR WOMEN at Lutheranch

October 20-22, 2017 (Friday-Sunday)

Soak in the beautiful scenery and solitude of Lutheranch relaxing your mind, body, and spirit by enjoying Bible study and even a massage!

Before 9/20: \$150; After: \$180



AWAKENINGSOUL: SACRED REVOLUTION

November 9-12, 2017

Come experience Sanctuary, Sustenance, and Inspiration. Sanctuary~ a sacred space of hospitality where all can find rest, respite and renewal. Sustenance ~ abundant food for our hungry souls; Diana and Dom will offer intellectual and spiritual nourishment, challenging us to live our faith more authentically. Inspiration ~ deep conversation about things that really matter, uplifting music, provocative art, and spirit-filled worship, challenging us to look deeply into our lives, and energizing us as we return to our communities. Register at awakeningsoulpresents.org.



CREATE AND CONNECT at Luther Springs

November 13-15, 2017 (Monday-Wednesday)

Discover resources to discern your God-given gifts to find meaning, passion and purpose for this stage in your life, while enjoying the beauty and peace of Luther Springs. Leader: Margo Walbott, ALOA FL Region

ALOA: \$99; NonALOA: \$135 *Call registration for discounted rates on cabin and campsite lodging!*



TRAILBLAZERS (completed grades 1-5) at Luther Springs

November 17-19, 2017

Theme: Advent! Kids will enjoy regular camp activities, explore the season of Advent, create Advent projects and even bake cookies! Students will stay in cabins with counselors and can come on their own or with a church group.

Youth: \$125; Adult: \$95 *Receive a \$30 discount by registering by October 17!* (call for group rate!)



YOUTH WORKER'S RETREAT at Lutherock

November 27-29, 2017

We will explore the importance of Godly Play and how that pertains to working with youth. Learn new games and initiatives to use with your youth group and tools to relate those to faith. **\$50**



MOUNTAINTOP FAMILY ADVENT at Lutherock

December 1-3, 2017 (Friday-Sunday)

Go on an ADVENTure to prepare for Christmas. Disconnect from the hustle of the holidays and discover the joy of time together. Rate includes lodging for two nights, meals, and programming.

Leaders: Pastor Will Rose and Cindy Morton-Rose

Adult: \$110; Youth: \$60



FUN IN THE SON SKI BEECH RETREATS at Lutherock

January 12-15, February 9-11, and February 23-25, 2018

Spend time in Bible study and time at Beech Mountain; we'll have some fun in the Son and in the Sun! Staff will handle reservations and provide evening programming and vespers. Chaperones must accompany youth and provide transportation. **2 Day: \$127.00/youth \$92.00/adult**

3 Day: \$152.00/youth \$97.00/adult



WILD WOMEN WEEKEND at Lutheridge

Feb 2-4, Feb 9-11, Mar 2-4, Mar 9-11,
and Mar 16-18, 2018

THEME: "SuperWoman" - Expectations & image (others & our own), guilt and the call/power of God to find/be ourselves. Scripture: Proverbs 31 & Mary, Jesus' mother. **\$220**



FAMILY CAMP at Luther Springs

February 2-4, 2018 (Friday-Sunday)

Life is crazy and your calendar is full!

Families will enjoy regular camp activities while also exploring fun faith building activities. If they are family to you, they are family to us!

Adult: \$105; Youth: \$70 *Call Registration for discounted rates on cabin and campsite lodging!*



EQUIP HIGH SCHOOL LEADERSHIP at Luther Springs

February 16-18, 2018

This event is for students who are ready for more than the average youth event. They will explore theological issues, discern their gifts for leadership and be challenged!

Youth: \$125; Adult: \$95 *Receive a \$30 discount by registering by January 16*



HANDBELL WORKSHOPS at Lutheridge

February 16-18 AND February 23-25, 2018 (Friday-Sunday)

Two opportunities for individual ringers or entire choirs to gain skills for their home ministries. Renowned clinicians share skills and inspiration. Choirs will leave with pieces that can be used in their own congregation.

Onsite: \$255; Commuter: \$210



MASTER'S BUILDERS at Luther Springs

February 23-25, 2018

(Friday-Sunday)

Like working with your hands? Join us while we do big and small projects to improve Luther Springs, enjoy the lake, tell stories around the campfire, enjoy a healthy competition through camp games and sit on the back porch talking about our faith. Leader: Steven Helm

\$115 *Call registration for discounted rates on cabin and campsite lodging!*



DECATHA-LOCKIN (grades 6-8 AND 9-12) with Luther Springs

8pm March 2-8am March 3, 2018

Youth, get ready for this all night, insanely fun, fundraiser! Please bring 1-2 chaperones per team. This fundraising event will raise money for camp scholarships. Groups are asked to bring snacks/drinks to share. Pizza provided. **\$35**



QUILTING RETREAT at Luther Springs

March 5-9, 2018 (Monday-Friday)

Teachers will assist with projects, as well as answer questions regarding different techniques. Quilters may work on provided projects for gift ideas & to benefit non-profits, as well as their own projects.

\$370 *Call registration for discounted rates on cabin and campsite lodging!*



WOMEN'S WELLNESS WEEKEND at Lutherock

March 16-18, 2018

We will focus on taking care of ourselves physically, spiritually, and mentally. Enjoy fellowship, Bible study, and wellness opportunities like Yoga, Aroma Touch Therapy, Hiking, DIY Bath Salts, Essential Oils 101, and time with your sisters in Christ! **\$205**



RESPITE IN THE WILDERNESS at Luther Springs

April 3-5, 2018 (Tuesday-Thursday) **\$100**

CREATE IN ME at Lutheridge

April 5-8, 2018 (Thursday-Sunday) Onsite: **\$308;**
Commuter: **\$210**

RIVER RAT RAMBLE at Luther Springs

April 6-8, 2018 Youth **\$135; Adult \$95**
(\$30 discount before 3/6)

50Forward Backpack Trip at Lutheridge

April 26-29, 2018 (Thursday-Sunday) **\$249**

THE ROCK 5K at Lutherock

April 28, 2018 **\$25**



Needs

Luther Springs

- Minivans for day camp teams
- Pontoon boat and motor
- 9 hp motor for safety boat
- Canoes, sports balls
- Fuel efficient vehicle for staff travel
- Ryobi 18+ rechargeable drill batteries
- LED Projector

Lutheranch

- LED Projector
- AED automated external defibrillator

Lutheridge

- Work truck with automatic transmission
- 4-wheel drive Tractor with front bucket and backhoe
- Minivans in good working condition with low miles (for day camp travel teams)
- 4-door sedan vehicle (for staff travel)
- Dehumidifiers
- New or good used washers, dryers and refrigerators
- Golf Carts

Lutherock

- 12-passenger van/bus
- Work truck with automatic transmission
- Weed eater/trimmer
- New or good used washers & dryers

Deeds

We honor the following volunteers and donors who shared their time and talents during the period of January through April 2017.

Luther Springs

- Donors, Tom and Linda Culverwell handed over the keys to their 2004 Honda Odyssey to Luther Springs volunteers, Pastor Dan and Paulette Kilts, who picked up the van (pictured at right). The Culverwells are members of Trinity Lutheran Church, Jacksonville. They are long-time monthly donors to NovusWay Ministries. Tom is the Mission Possible Congregational leader for Trinity. The congregation will conclude their campaign on May 14.



Lutheranch

- Many thanks to a group of men from Lutheran Church of the Resurrection in Marietta. They worked early in the year to accomplish raking, lime, seeding and putting straw down on the new wastewater line. John Didicher and Mike Mynhier were the group leaders.
- Mr. and Mrs. James Dathe, of Roopville, GA provided funding for a work truck for Lutheranch, for repairing a Bushog and to provide water and electricity to RV campers.

Lutheridge

- The following individuals have donated these necessary appliances to Lutheridge: Doris Fogg – a dryer & portable dishwasher; Amber Wollner – a dryer ; Beth and Doug Kearney – a washer & dryer.
- Norman Hilmer, Conover, NC, has been working on electrical needs at the Pioneer B Cabins
- Roland Stonaker, St. Augustine, FL has volunteered his time in preparation for the Fire Marshall's inspection.
- 15 volunteers from Lutheran Builders of WNC volunteered in March to work on the Pioneer B cabins. Al Mullen is their group leader.
- The youth from Calvary Lutheran in Apollo Beach, Florida (The Journey) were also here in March under the leadership of Jordan Palzer.
- The Epiphany Builders of Winston-Salem (led by Mike Spain), also worked on the Pioneer Cabins in the month of March.

Lutherock

- Volunteers from Raleigh Lutheran Campus Ministry spent time splitting wood and cleaning up trails.
- The North Carolina Emergency Response Team (NCERT) Mountain Division, helped with wood splitting, wood chipping, and set up 7 platforms tents.

Thank you to all! If you or your group is interested in helping with camp projects, please contact Craig Rieger at 828-209-6313 or crieger@NovusWay.com.

Thornburg Legacy

The Thornburg Legacy encourages and recognizes generous individuals and families who wish to perpetuate the mission of NovusWay by means of a planned gift, which may mean designating a portion of their will to NovusWay, naming NovusWay as beneficiary to a life insurance policy, establishing a Charitable Gift Annuity with NovusWay as beneficiary or any other gift that comes to NovusWay after death. The following individuals and families are members of the Thornburg Legacy.

- The Rev. Craig and Mrs. Ginny Abee

Mr. David C. Backus, Sr.

Libby and Billy Bedenbaugh

Nancy Boccadoro

Richard and Sheryl D. Breitmoser

Mrs. Evelyn Brittingham

Christine Boe Brooks ☩

Mark and Sandy Brosch

Robin and Carol Bryan

Mr. and Mrs. Steven Calcutt

The Rev. Marion W. and Mrs. Edith Clark

Edna Corley ☩

E. Ruth Counts

The Rev. Robert ☩ and Mrs. Ann Dasher

Mr. Ralph ☩ and Mrs. Mary ☩ Deal

Mr. and Mrs. John Didicher

Mr. John Didicher, Sr. ☩

Mr. and Mrs. John J. Dress, III

Mrs. Carol Ernst ☩

Mrs. Velma H. Eberly ☩

The Rev. Eric Fink

Mr. Meridan E. French

Sarah Frey ☩

Pastor Jay and Tia Gamelin

Mrs. Doris C. Gehring ☩

Miss Miriam E. Gnann ☩

Mr. ☩ and Mrs. ☩ W. Sidney Gnann

Mr. and Mrs. Robert L. Gobble, Jr.

Betty Goodwin ☩

Deems Haltiwanger ☩

Onie Fulmer Haltiwanger ☩

Terry and Lori Halvorson

Donna Hanna

The Rev. Terry Park Hannon

Dr. Edward ☩ and Vickie Hauser

Clara Hawkins ☩

Chris Hegele

J. Stephen and Beverly Henderson

The Rev. Scott and Sandra Holland

The Rev. David and Jo Ann Hood

Mr. Walter ☩ and Mrs. Carolyn Hooker

Mr. John E. Hughes ☩

Art and Ginny Hultquist

Rev. Dr. Harvey, Sr. ☩ and Mrs. Lucy ☩ Huntley

Alan and Dawn Hyatt

Mrs. Mary S. Jahnsen ☩

Mr. and Mrs. Milton D. Jellum

Dr. Harrison ☩ and Mrs. Ruth ☩ Jenkins

Mr. and Mrs. Marty Jenkins

Keith and Lori Johnson

The Rev. Dr. and Mrs. David R. Keck, Sr.

Ms. Mary W. Kehl

Mrs. June Kemp

Porter and Amelia Kinard

Mr. ☩ and Mrs. ☩ Robert T. King

The Rev. Voigt ☩ and Marie W. Kleckley

Robert ☩ and Edna Kluttz

Mr. Hal Kohn Jr. ☩ and Charlotte ☩ Kohn

Linda Lael

Odell Laffon ☩

Inez LaSalle ☩

Russell and Elisabeth Lentz Foundation

Georgia Livingston ☩

Anna Lohmann ☩

Mrs. Peggy Mann

Mr. and Mrs. Fred Mappus
- Imogene E. Myers ☩

Mildred F. Miller ☩

J. V. Mills ☩

The Rev. Dr. Bill and Sherry Mims

Mr. and Mrs. Larry Moeller

George Moretz

Mrs. Imogene E ☩ Myers.

Mr. ☩ and Mrs. ☩ Ron Neubert

Mr. and Mrs. Merle A. Parker

David and Ranate Patrick

The Rev. Darrel and Mary K. Peterson

Charlotte L. Petty

Mrs. Arthelia Phillips ☩

The Rev. and Mrs. Donald R. Poole

Donald Wade and Janet Poust

Pastor John and Liz Propst

The Rev. Dr. Shirley M. Redmond

Mrs. Debbie Reid

Ross ☩ and JoAnne H. Ritchie

Mr. Claude and Mrs. Annemarie Roberts

Ms. Mary Alice Rutherford

Robert A. Sain

Mary Riser Schaeffer

Jason and Mitzie Schafer

Steve and Sandra Schultz

Mrs. Evelyn C. Segelken ☩

The Rev. Dr. John L. Setzler

Allison Furman Sewrey

The Rev. and Mrs. C. Pierson Shaw

The Rev. Wallace Shealy

Mrs. Juanita Sigmon ☩

John and Linda Simon

The Revs. George L. and Martha M. Sims

The Rev. Mary L. Sitton

Mr. Gus and Mrs. Frances ☩ Stavros

The Rev. Kevin L. Strickland

The Rev. Dermont Swicegood ☩

The Rev. and Mrs. G. David Swygert

The Rev. Luther Swygert ☩

Mrs. Anna Teitel ☩

Katherine Theiling ☩

Freeman Thomas ☩

David and Susan Troutman

Mr. ☩ and Mrs. ☩ Ernest M. Troutman

Mr. Robert L. ☩ and

Mrs. ☩ Margaret Troutman

Vincent J. Vierling ☩

Warren H. and Miriam O. Walka

The Rev. Mike and Hannah Ward

Maud Weber ☩

Herman Wessinger ☩

Ralph Wessinger ☩

Mr. Lee ☩ and Mrs. Jean White

Richard and Cathy Whittecar

Mr. Dennis and Mrs. Jeanne Wieckert

John ☩ and Louise Willim

Mr. Guenther (Chris) ☩ and

Mrs. Christa Wunderlich

Mrs. Wilma G. Wygant ☩

Three (3) Anonymous
- ☩ Indicates those donors whose gifts are already working to provide support to NovusWay Ministries. For more information on planned giving, contact Keith Trout, Development Director, ktroat@NovusWay.com or 828-684-2361 ext.325.



The Thornburg Legacy is named for Dr. J. Lewis Thornburg, founding director of Lutheridge. Dr. Thornburg left a legacy that has grown to include Lutherock, Luther Springs and Lutheranch.



Magnitude Of Gratitude

RidgeRock Builders • Ranch Builders • Friends of Luther Springs

Builders/Friends contribute \$500 or more annually. **Master Builders** give \$1000 - \$2499, Cornerstones contribute \$2500 - \$4999, NovusWay Champions provide support of \$5000 - \$9999, and **Keystones** make annual gifts of \$10000 - \$24999. **Foundation Builder/Founders Circle** donors contribute \$25000 or more annually. The following donors have attained their gift levels from January 1 to March 31, 2017. Please note that the list does not include those who were listed in previous LINK newsletters, nor does it include those who contributed to Heritage, Standing on the Promise, Complete the Dream or Mission Possible Campaigns.

Ridge Rock Builders

NovusWay Champions

Mr. and Mrs. Todd Douglass
Mr. and Mrs. Milton D. Jellum

Cornerstones

Mr. and Mrs. Robin Bryan
Master Builders
Anonymous
Mrs. Jean W. Blount
Mr. and Mrs. Mark Burton
Mr. and Mrs. Charles H. Carlson
Mr. and Mrs. Bradley Dunning

Ms. Linda E. Lael
Mrs. Peggy K. Mann
Mr. and Mrs. D. Laverne Mattox
Ms. Mitzi McLean
Mr. and Mrs. Stephen W. Park
The Rev. and Mrs. Donald R. Poole
Mr. and Mrs. Glenn C. Shoaf
Mr. and Mrs. Robert L. Thornburg

RidgeRock Builders

Mrs. Marcia Ballentine
Ms. Katie Branscomb
Ms. Nancy C. Bremmer
Mr. and Mrs. James Cupps

Mr. Eldon R. Eargle
Mr. and Mrs. Alvin P. Kates
Mr. and Mrs. John T. Mims
Ms. Jennifer Propst
Mr. and Mrs. Paul M. Schabacker
Mr. and Mrs. Charles Scheid
The Rev. Ronald G. Smith
The Rev. Christine Stoxen

Ranch Builders

Ranch Builder

Mrs. Carolyn E. Hoffner
Mr. and Mrs. John Lucht

Mr. and Mrs. Harlow J. Minkin
Mr. Darrel Reifschneider
Mr. and Mrs. John Schuerholz
Mr. and Mrs. Daniel J. Vesper

Friends of Luther Springs

Master Builder

Mr. and Mrs. Joel D. Rentz

Friends of Luther Springs

Mrs. Patricia Golgart
The Rev. Rodney D. Josephson
Mr. and Mrs. Andrew Pelosi

Honor Gifts

The following honor gifts to the annual fund were received between January 1 and March 31, 2017. The lists are constructed in alphabetical order by the last name of the person honored. Honor gifts to campaigns will be listed in special publications at the conclusion of each campaign.

Christy Agner

Pamela L. Agner

Deena Bedenbaugh

Billy and Libby Bedenbaugh

Laura Bedenbaugh

Billy and Libby Bedenbaugh

Ann Dasher

Dr. and Mrs. R. Boyd Hendrix

God's Glory

Bradley Dunning

Vickie Hauser

David and Susan Troutman

NovusWay Staff

Ms. Linda E. Lael

Chris & Sally Mendola – 50th Wedding Anniversary

Iris Hollis
James Seuntjens

The Rev. Ray & Mrs. Ann Mohrmann

Donna Hanna

William Patrick

Donald Goldsmith

Quilters – Rudy & Emma

Luther Springs Quilters

Memorial Gifts

The following memorial gifts to the annual fund were received between January 1 and March 31, 2017. The lists are constructed in alphabetical order by the last name of the person memorialized. Memorial gifts to campaigns will be listed in special publications at the conclusion of each campaign.

Rose Anderson

Mr. and Mrs. Alvin P. Kates

Julia Broome

Ms. Nancy Walkup

Tom Causby

Mrs. Dorothy C. Trexler
The Rev. Dr. and Mrs. William B. Trexler

Marilyn Ellerbeck

All Saints Lutheran
Church, Huntsville, AL

William Estep

Mr. and Mrs. Alvin P. Kates

Dr. Edward Hauser

Mrs. Dorothy C. Trexler
The Rev. Dr. and Mrs. William B. Trexler
David and Susan Troutman

Lois Kibler

Billy and Libby Bedenbaugh

Frank Laslow

Mrs. Geraldine J. Heintz

Wesley Lynn

All Saints Lutheran
Church, Huntsville, AL

Harriette Lysfjord

Mrs. Muriel Johnson

Elise Bedenbaugh Martin

Billy and Libby Bedenbaugh

Ann Norvelle

Mrs. Claire G. Willett

John Refieuna

All Saints Lutheran
Church, Huntsville, AL

Helen Smith

The Rev. Ronald G. Smith

May Stromsland

All Saints Lutheran
Church, Huntsville, AL

Todd Szalkowski

Mr. and Mrs. Alvin P. Kates

Jimmy Wiggs

All Saints Lutheran
Church, Huntsville, AL

G. Chris Wunderlich

The Rev. Dr. and Mrs. John L. Setzler

Jeanne K. York

Mr. Jerry M. Keene &
Mrs. Vickie Agner-Keene
Ms. Corey Lenger



Pastor David Kruger, Tampa, Florida, completed his service as a deployed Development Associate at year-end 2016. Kruger is a long-time supporter of Luther Springs, having served on the Board of Directors and as a leader of the GRANDS program. He continues to help lead the spring phonathon for Luther Springs as a volunteer. God Speed Pastor Dave!



THANK YOU

to those of you who have designated your Thrivent Choice dollars to one of our camps!

These funds help send children to camp. If you are a Thrivent member, visit www.Thrivent.com/ThriventChoice to see if you are eligible.

NovusWay to Reduce Paper and Mailing Costs

NovusWay is using electronic mail more frequently in an effort to reduce paper and mailing costs. If you would like to receive some of your mail from NovusWay electronically, please send your name and email address to Margo Rabon, mrabon@NovusWay.com. You can also request publications such as the LINK newsletter – either in print or electronic formats. Thank you to those who have already sent us their email address!



The LINK Wins PICA Award

The staff of NovusWay works in partnership with Clark Communications of Asheville, NC, to produce the LINK newsletter three times per year. We are proud to announce that the Fall 2016 issue of the LINK received a PICA (Printing Industry of the Carolinas), Best in Category award for newsletters (4 or more colors). The LINK has been our way of communicating news and information about our camps for around 25 years. This May 2017 LINK is our 75th issue.

Stephen and Carolyn Williams Donate Property to Lutheridge and NovusWay

Several years ago, Stephen and Carolyn Williams purchased a two-acre lot at “Cliffs of the Valley,” a golf course development near the North Carolina/South Carolina border on U.S. 25. Stephen is an avid golfer and, it was their intent to build their retirement home there.



Carolyn and Stephen Williams

Stephen and Carolyn have lived in Concord, North Carolina for 33 years where they are members of Calvary Lutheran Church. Stephen was employed as manager of a computer consulting firm and first retired 14 years

ago, after which time he decided to take a “fun job” and worked at Bass Pro Shops until last year. Their plan to move to “Cliffs of the Valley” changed when they built their retirement home near one of their daughters in Concord. They then had to decide what to do with their lot at “Cliffs of the Valley.” One of Stephen’s golfing buddies, the Rev. Richard Graf, suggested they may want to gift the lot to Lutheridge. (Graf and his wife Shirley recently purchased a home and moved to Lutheridge).

It turns out that Stephen and Carolyn have a long history with Lutheridge. Both of their daughters attended camp from the 3rd grade through high school, and their former pastor, the Rev. John Boyd chaired the Lutheridge board at the time of the merger with Lutherock in 1991. Stephen helped to remodel Pioneer cabins in the mid 1990’s when Markus Strauss served as Lutheridge’s Volunteer Coordinator for the project. Strauss later moved to Concord, and his family became members of Calvary Lutheran Church where he renewed his friendship with Stephen.

In March 2017, Stephen was back at Lutheridge with

NONPROFIT ORG
US POSTAGE
PAID
ASHEVILLE NC
PERMIT #575

NOVUS WAY, INC

28 SPRUCE DRIVE
ARDEN, NORTH CAROLINA 28704

Change Service Requested

men from his congregation to help remodel Pioneer Cabins for a second time. It was at this time that he and Carolyn made the decision to donate their lot to Lutheridge and NovusWay. Proceeds from the sale will be used in three ways: 1) to remodel a Pioneer B Cabin 2) to replace a rusted out 250 gallon hot water heater that served all 35 guest rooms in Thornburg Hall with two new high efficiency 110 gallon water heaters, and 3) to name a room in the new retreat center at Lutheranch. The balance will go to provide financial assistance for youth to attend camp this summer. Mr. & Mrs. Williams are delighted that their gift will help in so many ways, and he exclaimed, “*It is interesting how God provides just as a need arises.*”

If you would like to donate a piece of appreciated real estate contact Keith Trout Development Director, at kt trout@NovusWay.com, or call 864-313-1453.

THE LINK

The LINK is published 3 times per year by NovusWay Ministries.
Standard postage paid at Arden, NC.
Postmaster: Please send address changes to
The LINK, 28 Spruce Drive, Arden, NC 28704.

NOVUS WAY BOARD OF TRUSTEES

Florida/Bahamas Synod

The Rev. Joe Glymph, Todd Johnson

North Carolina Synod

Gwen Glaeser, The Rev. Gregory B. Williams

South Carolina Synod

The Rev. Christine Stoxen, Kevin Wicker

Southeastern Synod

The Rev. Dale A. Sillik, Mary K. Peterson

At Large

Dr. Everett Flanigan,
Susan Lee, Katherine Till,
Paul Schabacker,
Larry Moeller, Joel D. Rentz

Bishops

The Rev. H. Julian Gordy
The Rev. Marcus Lohrmann
The Rev. Dr. Timothy M. Smith
The Rev. Herman Yoos

ADVANCEMENT STAFF

Libby Bedenbaugh, Senior Development Associate

Dr. Patrick Fuller, Development Associate

Debbie Lundell, Special Events Coordinator

The Rev. Jan Setzler, Senior Development Associate

Keith Trout, Development Director

PROGRAM STAFF

The Rev. Mary Canniff-Kuhn, Lutheridge Program Co-Director

The Rev. Tim Canniff-Kuhn, Lutheridge Program Co-Director

The Rev. Rick Malivuk, VP of Program

Sue Mendenhall, Luther Springs Program Director

Kara & Jacob Ridenhour, Lutherock Directors

OTHER STAFF

Kara Beck Dye, Marketing Coordinator

Keith Johnson, Executive Director

Becky Maxwell, VP Finance & Support Services

Margo Rabon, LINK Editor

Craig Rieger, VP of Sites & Facilities

NovusWay is owned and operated by the Florida-Bahamas, NC, SC, and Southeastern synods of the Evangelical Lutheran Church in America and serves all ages from the SE USA. Its camp and conference facilities are Lutheridge, 160 acres in Arden, NC, known for its summer camp and year-round ministry programs; Lutherock, 762 acres on Sugar Mt., near Newland, NC, known for its rugged, outdoor adventure ministry; Lutheranch, 519 pristine acres in Tallapoosa, GA and Luther Springs' 350 acres on the shores of Lake Vause in Hawthorne, Florida.