

# THE LINK

YOUR CONNECTION TO WHAT'S HAPPENING AT

FALL 2018 | Vol LXXIX No. 3, October 2018



## Raising Up Leaders, Changing Campers' Lives

**T**his summer, on the south slope of Sugar Mountain, a little over 550 campers, adult guests, and staff made their way to Camp Lutherock for time to unplug from life at home and plug into time spent outside in a Christ-centered community. Over the course of one week of camp or a summer full of camp ministry these 550 lives were somehow impacted by how they experienced God's love in this beautiful setting.

### Raising up Future Leaders

Every summer, Lutherock hires a staff of counselors and Senior Staff, these are largely college-aged young adults who are called to Lutherock because they know the value of camp and believe in its mission. While the focus of summer camp is certainly on campers, the impact of summer camp ministry touches the staff as well. This summer, two of Lutherock's Senior Staff members are currently attending Seminary. Seminary summers are usually pretty busy with CPE, course work, or internships; yet these future leaders in the church decided that camp is a valuable asset to ministry and wanted to play their part. Elise Anderson, Lutherock's On-site Area Director for summer 2018 and Chaplain for summer 2015, attends Lutheran School of Theology at Chicago and had this to say about the value of camp:



Elise Anderson

*"Going to camp was such a huge part of my faith formation as a kid that when I decided to go to seminary it felt natural that working at a camp should be a part of my formation as a young pastor. The community that is made week after week at camp is unlike any other and the freedom that it gives kids and adults, alike, to express their faith and experience God in new and powerful ways is completely unique to the camp setting. I*

*couldn't have asked for a better place to grow spiritually and in my leadership skills, than at Lutherock, it has shaped and will continue to shape the way I minister to the people of God."*

In addition to helping to raise young leaders in the church, Lutherock also serves as a place of discernment for many staff. Two of the summer staff at Lutherock this summer are currently pursuing year-long internships at other outdoor ministry sites. Nathan Boykin, who served as the Outdoor Adventure Program Area Director this past summer, will

be spending the year at Rainbow Trail Lutheran Camp in Colorado. Nathan commented, *"Working for Camp Lutherock the past four summers, has given me the opportunity to see how outdoor ministry can change people's lives in many ways. Camp has a way of allowing people of all ages to unplug and reconnect with themselves, the environment, and their faith. This impacted my decision to seek out an internship in outdoor ministry."*



Nathan Boykin



Annika Wagner

Annika Wagner, who served as an Outdoor Adventure Program Counselor this past summer, is spending a year with Flathead Bible Camp in Montana.

Annika happily shared, *"The impact that camp had on me started when I was a camper. Starting at Lutheridge and then transitioning to*

*Lutherock, I knew I wanted to be a counselor. Through college I worked other summer jobs until after my junior year when I realized it was now or never to be a counselor. My first summer at Lutherock helped me learn that I see God through children, nature, and acts of kindness. Then, I decided to come back after graduating because the community and joy is incomparable to anywhere else. It is such a rewarding experience to be able to inspire children and adults while showing them how awesome God's creation is. I now work at Flathead Lutheran Bible Camp in Lakeside, Montana so I can learn about the other sides to outdoor ministry and maybe pursue a career in it one day."*

Truly God's Spirit is at work inspiring and raising up leaders in ministry in places like Lutherock.

Continued on page 3

## UPCOMING PROGRAMS

See the Non-Summer program guide on pages 5 & 6 to plan your future attendance.

Register online at  
[www.novusway.org](http://www.novusway.org)







Securing the Future of  
Luther Springs and Lutherock

## Gratitude And Excitement In Abundance For Dedication Weekend At Luther Springs

**H**urricane Irma spoiled plans for a dedication weekend at Luther Springs September 8-9, 2017. Plans to dedicate both the newly completed Alberta's Kitchen and the Pauline Schmettmann Memorial Wing of adult housing had to be rescheduled. In the meantime, a third Mission Possible campaign project was completed. The new Cinda Morgan Lakeside Pavilion was also ready for dedication. Plans for the Atonement Chapel and Meeting Room were finally approved (after adjustments to comply with a Putnam County Planning Commission requirement to move the Chapel's footprint ten feet from the proposed location). The Chapel

continues to generate strong fund-raising interest. It was time for a groundbreaking! Not even the heat and humidity of August in Florida kept a crowd from gathering at Luther Spring to dedicate three completed Mission Possible Campaign projects and break ground for a first-ever Chapel and Meeting Room. Major gift donors to these projects arrived Friday night, August 10 at Luther Springs for a special "gratitude dinner". A comment after the Friday night dinner reflected emotion and genuine gratitude to God: "When I looked at the people gathered in this room tonight, I knew for sure that Luther Springs has reached a new stage of ministry. The future here is secure!"



The Rev. Jan Setzler and Bishop Suarez  
conduct the Dedication Service.

The group was joined Saturday morning, August 11 by some 100 Luther Springs friends and donors from across the synod for a Service of Dedication and Groundbreaking. A



Guests enjoy a special gratitude dinner

large Quilting Retreat was in progress that weekend so Saturday's events shifted outside to the Morgan/Westfall Pavilion. The Service of Dedication with Holy Communion began at 10:30am. Campaign Director Pastor Jan Setzler was the preacher. Bishop Pedro Suarez officiated at Holy Communion, dedicated the three completed campaign projects



Breaking ground

and blessed the site for the new Chapel. A group of 2018 Luther Springs summer staff returned to help with the Friday night dinner, provide music for the Saturday morning worship and assist with special activities for all ages Saturday afternoon. Displays of Alberta's Kitchen, The Pauline Schmettmann Memorial Wing and the Cinda Morgan Lakeside Pavilion allowed the projects to be dedicated at the worship site. Bishop Suarez led the congregation in procession across the road to the groundbreaking site for the Atonement Chapel and Meeting Room.

The first group to break ground included Pastor Jefferson Cox for

Atonement, Bishop Pedro Suarez, Mr. Boyd (Bo) Harris, Mr. Gary Klein, contractor, and Luther Springs' Miss Sarah Anderson. Mission Possible Campaign Co-Chair, Pastor Jack Diehl and his young grandson were among those breaking ground. "My daughter and grandson surprised me by showing up here today," Pastor Diehl confessed. "They are living examples of my family's involvement in and commitment to outdoor ministry. Their presence made this day extra special for me!" Other special guests for the weekend's activities included Mrs. Alberta Siepiela, Dr. John Schmettmann and members of his family, Mr. Edward Morgan and Pastor Jefferson Cox, representing the former members of Atonement Lutheran Church.



Pastor Diehl and his grandson

Luther Springs' "Miss Sarah" prepared a barbecue lunch served following the Chapel groundbreaking. Lunch included a surprise birthday cake for one of Luther Springs'



Mrs. Alberta Siepiela blowing out her candles

faithful, generous donors, Mrs. Alberta Siepiela, who celebrated her 96th birthday July 30. Mrs. Alberta, not shy at all about her age, blew out the candles, enjoyed hearing "Happy Birthday" and gladly shared her cake with the crowd. The afternoon was free for guests to enjoy the swimming pool, tours of the site provided by summer staff or just relaxing with fellow supporters of the ministry.

Contributions to the Mission Possible Campaign to Secure the Future of Luther Springs and Lutherock now total \$2.19

million toward the base goal of \$2.23 million. These contributions help secure the future for Luther Springs by increasing capacity by expanding facilities. This includes a fifth camper cabin in the Morgan Village, Alberta's Cabin; Alberta's Kitchen expansion; the Pauline Schmettmann Memorial Wing of additional adult housing; the Cinda Morgan Lakeside Pavilion (first of two Living Lab Outdoor School facilities for the environmental education program). Campaign contributions are also reducing Luther Springs' external debt. More funds are needed to construct and furnish the Atonement Chapel and Meeting Room, the Teaching Dock (for the Living Lab Outdoor Program), Kinports' Porch Renovation and a recreational field.



Atonement Chapel Rendering

By the end of a wonderful Dedication Weekend, Campaign Director Pastor Setzler had this to say: "I'm grateful for the 85 Florida and North Carolina congregations and the more than 600 members of those congregations who have embraced the vision and goals of the Mission Possible Campaign for Luther Springs and Lutherock. Their generous giving helps secure the future of these ministries. I'm excited to know there are congregations and people we've not yet reached waiting to help put this effort over the top." To help with this "final push" contact Pastor Setzler by email at [jsetzler@novusway.org](mailto:jsetzler@novusway.org) or call him at 864-942-2974.

## Faith Alive

**H**onestly, I stumbled on to Faith Alive! I was the interim pastor at Zion Lutheran Church in Lexington and the youth advisors, parents and I were looking for a weekend event that would bond our youth together. I saw the Faith Alive weekends listed in the NovusWay brochure. We decided to try "The Lord's Prayer" weekend in September. Well, not only did they bond, they got off the van telling their parents, "We want to go back to all of them!"

When I came to Incarnation Lutheran Church in Columbia, I listened to parents and youth describe their schedules: soccer, swim team, homework, band, after-school family responsibilities. "We want our kids in Confirmation," the parents said, "but making a weekly class is almost impossible." I told them about Faith Alive. I told them that in four week-ends over a two-year period we could cover Luther's Small Catechism and Luther and the Reformation. Both parents and youth were immediately on board. We have now completed the first year and in September will be back to begin the second year. With the exception of a rare illness and one major surgery, all nine have attended all four weekends and all but one, with a school conflict that can't be avoided, are signed up to go in September.

Each weekend is packed full of interactive content: games, worship, songs, and fellowship! Even the lessons are active and fun. We head home on Sunday worn out but alive in faith! On the way home, they plan to share one thing they learned with the entire congregation in worship. You should see a whole congregation doing the motions to the Apostles' Creed! But they also repeat the whole weekend for their parents after worship that day as well.

This time away together is amazing. Their growth in faith is amazing! The emergence of their spiritual gifts is amazing! One of my youth says, "I love hanging out with friends and singing around the campfire." Another says, "It's awesome." And I agree!

Rev. Jane P. Mitcham is currently an Interim Pastor at Incarnation Lutheran Church in Columbia, South Carolina.



Faith Alive participants enjoy  
the Group Interaction Course





## God Does Mighty Work Through Your Faithful Support

In this fall issue of the LINK, we gratefully celebrate another safe and successful summer of life-changing camp and retreat ministry that took place at each of our four wonderful sites.

Nearly 3,000 campers and guests enjoyed fellowship, fun, and faith formation at Lutheridge, Lutherock, Luther Springs, and Lutheranch. Some 130 summer staff and counselors worked as camp leaders. This experience powerfully impacts them and the campers they serve, while also training them and raising them up to be the next generation of leaders in the church and in the world.

As you can imagine, all of this summer activity, with thousands of campers and guests coming through our programs, takes a toll on our vehicles, buildings, and equipment. While lives are forever changed, so too are beds and rocking chairs, carpet and paint, golf carts and paddle boats. We know this is a small price to pay for the great experiences that so many have when encountering Christ's love through our ministry.

However, we must remain good stewards of the buildings and equipment with which we have been entrusted, and we must remember these resources are not just buildings and equipment, gaga ball courts, and lawnmowers. They are the very tools of our ministry:

- It is through these places, and in these cabins, tents, hammocks, and chairs, that campers make new friends and form Christian community.
- It is in these outdoor chapels, high ropes courses, and canoes that campers experience new challenges that help them to grow and to see the world differently.
- It is in these buildings and on these grounds that counselors show care, mentor, and love these kids unconditionally.
- It is here, at Lutheridge, Lutherock, Luther Springs, and Lutheranch, where God speaks, and we take the time to listen.

Each fall, as we celebrate another impactful summer and prepare for the next season of ministry, we appeal to our NovusWay friends, family, and donors to step forward and help us take care of these resources. These camp buildings and camp equipment play an integral part in the safe and effective delivery of our Christ-centered ministry.

God does mighty work through your faithful prayers and giving that undergird a ministry known to transform lives – the lives of people who, in turn, go out from here to love and serve a hurting world. Please see the list of facility needs in the adjoining article and join me in supporting this vital work.

Finally, I hope you will enjoy this newsletter, and I pray you will be inspired and encouraged in your own faith journey by the accounts of lives touched and hearts changed during summer camp this year.

With gratitude,

Boyd W. Harris IV  
Executive Director-CEO

*Continued from cover*

### Changing Campers' Lives

Of course, there would not be a need for staff at camp if it weren't for the wonderful campers who come! This summer hundreds of youth and adults made their way to Lutherock for a week spent living in a fun, safe, Christ-centered community while exploring God's playground of a creation. Camp is all about broadening comfort zones. It is easy to see the impact of high adventure activities, sleeping away from home, and making new friends; but, camp also pushes faith comfort zones. Throughout the week campers are living in a loving community, experiencing new outdoor adventures together, and spending intentional time talking about Christ through every aspect of their day. This combination can only be found in a camp setting and has a big impact on a camper's faith journey.

This summer, Orfilio Pelaez, attended 4 of the 8 weeks of camp offered at Lutherock. When asked why he kept coming back, he said *"because I can be myself here."* Orfilio went on to say, *"Lutherock has had a huge impact on my life. It gave me a new sense of adventure. It brought me much closer to God with all of the outstanding Bible study. The positive and uplifting environment made me more confident with myself. I made so many friends who I am still in contact with. Overall Lutherock has been an extremely positive experience for me and I look forward to next summer and coming back to Lutherock."*



Orfilio Pelaez

The impact goes beyond the camper. Orfilio's mother, Camille Gulisano-Pelaez had this to say about Orfilio after his experience at Lutherock:

*"Orfilio has always been a good person, but Lutherock has given him room to grow spiritually as well as mentally and physically. He is much more adventurous since his camp experience. In addition, he is very comfortable with who he is, which many teenagers are not! I cannot say enough positive things about Lutherock, it is a great experience and has such a positive impact."*



Zachary Head

Another camper this summer, Zachary Head, participated in Lutherock's elementary Pathfinders program. Zachary had tried other camps before without success, but thrived at Lutherock. At the end of the week Zachary was so thankful for his time away on the mountain and shared this about his time at camp: *"Lutherock was an awesome experience. My favorite part was hiking to the cross rock. I loved being a part of God's nature and meeting new friends."* Zachary's parents, Michele and Ronnie Head, said *"We were so thankful that Zachary had a wonderful experience at Lutherock. His smile and excitement at the end to the week spoke volumes. We know God's hands were at work!"*

These are just two of hundreds of campers and camper parents who were touched by God on Lutherock's mountain this summer. Every week at camp, pictures of God's kingdom are seen daily at Lutherock. In the evenings, counselors help campers see Christ at work by asking their campers what their high, low and God moment of the day was. It is during these quiet times, gathered in a circle under a ceiling of stars and walls of fireflies that the Holy Spirit moves and a fun day at camp turns into so much more.

## Facility Needs

All Camps	
Rocking Chairs (40)	\$ 125
Shingles (per square)	\$ 120
Pre-summer vehicle service (15)	\$ 500
Sponsor a Camp Van	\$ 1,000
Carpet Cleaning	\$ 1,500
Lutheridge	
Lakeside Lodge (painting)	\$ 5,000
Kohnjoy (roofing)	\$ 19,000
Mission Hall (roofing)	\$ 23,000
Kohnjoy (bridge decking & railing)	\$ 26,000
Thornburg (conference stairs)	\$ 10,000
Tree work	\$ 7,500
Faith Center (smoke detection panel)	\$ 6,000
Zero Turn Lawnmower	\$ 9,000

Pioneer B – Unit Lodge (beetle damage)	\$ 25,000
Commercial Vacuum (30")	\$ 3,500
Lutherock	
Stone Lodge (roofing)	\$ 3,000
Rhododendron Cabin (roofing)	\$ 2,000
Crow's Nest (2 HVAC units)	\$ 2,500
Founders Lodge Freezer	\$ 6,000
Founder's Lodge Refrigerator	\$ 6,000
Commercial Gooseman Blower	\$ 6,000
Air Compressor	\$ 1,000
Bus Tires (4)	\$ 150
Luther Springs	
Kinports Dining Room floor	\$ 18,000
Air Compressor	\$ 1,000
Covered Walkway Extension	\$ 5,500
Pool Maintenance	\$ 2,500
Vehicle Tires (4)	\$ 100

Lutheranch	
Trinity House (interior painting)	\$ 6,000
Road repair and gravel	\$ 5,000
Zero Turn Lawnmower	\$ 9,000
Ropes Course and Tower	\$ 3,500
Nursing Supplies	\$ 1,000
Staff Support and Training	\$ 5,000
Laundry / Linen Expense	\$ 4,000
General Program Supplies	\$ 1,500
Grounds	\$ 1,500
Maintaining Fleet	\$ 4,000

Above is a detailed list of some of our ministry's current needs. Please take a moment to review the list and decide how you might like to help. If you have questions, please call **Keith Trout** at 864-313-1453 or email [kt trout@novusway.org](mailto:kt trout@novusway.org). An envelope is enclosed in this newsletter for your convenience.



## Good News – Across Our Sites

### Lutheridge:

- WNC Parent magazine readers voted and awarded Lutheridge – 1st Place in the Family Choice Awards for 2018 as BEST SUMMER OVERNIGHT CAMP! We were pleased to receive this distinction among the many summer camps in the Western North Carolina area!



- The East Region of Thrivent Financial conducted a social media campaign earlier this year called the “Connect and Give Back Challenge.” The campaign asked members to submit their updated email address and follow Thrivent on Facebook. With over 415 responses from a region-wide survey, the membership hit the goal and voted to select Lutheridge as the non-profit to receive \$1,000 to benefit the ministry! Thank you Thrivent Financial and the voting members!

- A washer and dryer were generously donated by and Jeffrey and Rhonda Luce.
- RaRa Schlitt donated artwork that will be used to decorate at both Lutheridge and Lutheranch.
- The group known as the "Lutheridge Lumberjacks" from Christ the King Lutheran Church in Cary, NC recently spent a weekend disassembling tents. The group leader is Chris Hegele.

### Lutheranch:

- The McKanna-Sandrock Retreat Center at Lutheranch and R. K. Redding Construction, Inc. were recognized by the Associated General Contractors of Georgia, Inc. with a first place award in its construction group. This 1st Place award celebrates the best the construction industry has to offer by a general contractor for meeting the following criteria: exceptional project safety performance, overcoming the challenges of a difficult project, innovation in construction techniques and materials, excellence in project management and scheduling, and dedication to customer service and client care. At the time the retreat center was built, RKR overcame a challenging natural landscape with limited access to utilities, as well as used resourceful creativity to produce the following: playfully hidden door, custom desk fabricated on-site, unique fusion of rustic-modern design and carefully sculpted staircase of cement and wood.
- James Dathe purchased new pine straw that he and other members of Grace Lutheran Church in Carrollton, Georgia put down in all the planted areas at the McKanna-Sandrock Retreat Center this summer. Thank you volunteers for your generosity and time!



### Lutherock:

- Zip the Rock II – Pastor Frank Wagner of Holy Spirit Lutheran Church, Juno Beach, FL had scheduled another bicycle ride from Juno Beach to Camp Lutherock (approximately 900 miles), stopping at churches along the way to spread the word and increase support for a zipline at Lutherock. The timing of the ride unfortunately coincided with Hurricane Florence in the Carolinas and had to be postponed. For more information visit [www.Lutherock.org/zip-the-rock](http://www.Lutherock.org/zip-the-rock). Thank you to Pastor Wagner for his dedication to the Zip the Rock II project!
- As a result of Hurricane Florence, we were able to reach out to evacuees from the coast by way of offering free housing at Lutherock and Lutheridge. Our offer of help on social media was viewed by over 81,000 and several families did spend the weekend sheltered with us.



- The future of Lutherock has been secured by contributions to the Mission Possible Campaign that enabled the ministry to purchase two critical pieces of property; the entrance to Lutherock and The Knob above “The Saddle”. A special naming gift effort by members and friends of Holy Spirit Lutheran Church, Juno

Beach, FL raised \$143,000 for naming rights to the entrance to the property. A dedication service at Lutherock, June 28, 2017, named the entrance The Wagner Gateway, in honor of Pastor Frank and Martina Wagner. Pastor Wagner’s 900-mile bike ride from Holy Spirit, Juno Beach to Lutherock in 2015 raised funds to cover survey and legal expenses leading to the purchase of the 52-acre entrance.

- The Rev. and Mrs. Steven P. Ridenhour and Mrs. Evelyn Ridenhour each generously donated a washer/dryer set to be used on the camp.

### Luther Springs:

- A Kia van has been donated to Luther Springs by Pastor Maryanne Kehlenbach from Living Faith Lutheran Church in Tradition, Florida. Pastor Maryanne Kehlenbach is pictured handing over the keys to Sue Mendenhall, Program Director.
- Dedication / Groundbreaking service and festivities were held the weekend of September 8-9. Read the full story on page 2!



## Adventures at Grands Camp



Grandchildren are blessings. They transform grandparents into fun-loving, patient people their own children barely recognize. Grandparents are blessings, too. They shower unconditional love and wisdom on their grandchildren. Plus, they give their own children a break from parenting. Lutheridge offers a sacred place where “grands” can play, explore, and share faith together for half a week each summer with no parents in sight. Some grandparents bring up to five grandchildren while others, like me, come with only one. A few children have little connection with any faith tradition. Many are active in Christian congregations.

Seven-year-old Pete listened to his parents’ blessing as they waved goodbye to their only child for a second Grands Camp with me this July. *“Make new friends and have new adventures!”* Their wish was fulfilled before the first supper bell called Pete and a dozen children away from the playground.

The children’s friendship grew each morning during KidzCamp where energetic and loving counselors led them in Bible time, singing, drumming, and other fun indoor and outdoor experiences. Grandparents made new friends ourselves during morning adult Bible studies and free time.

Morning watch and evening vespers bracketed additional adventures like hiking, swimming, canoeing, paddle boating, crafts, skits, singing, campfires, and eating s’mores. Pete’s favorite new adventure was canoeing on Lake

Lewthorne. Mine was FOB (Flat on Bunk) time after each lunch.

Adventures in faith were our most significant experiences. *“Gigi,”* Pete asked me, *“do you see God like you see me with eyes and ears and a body? Do you hear God’s voice like you hear mine?”* *“Gigi, why are some people bullies?”* *“Will I see my cat Sug-Sug in heaven? I miss him so much!”* Living together at Lutheridge made the exploration of revelation, sin, and eternal life just another easy conversation. I wonder what theological questions Pete will raise next summer!

**Sue Setzer**, a retired ELCA Deacon, is a spiritual director and yoga teacher who lives with her husband, Pastor Peter Setzer, at Aldersgate Retirement Community in Charlotte, NC. They are members of St. Luke’s Lutheran Church. Both Sue and her daughter Joy Henderson (Pete’s mother) were long-term campers and counselors at Lutheridge. Pete lives with his mother and father, Tim, in Mt. Holly, NC. They belong to Lutheran Chapel in Gastonia.

**NOTE:** Grandparents and Grandkids can come together at Luther Springs for GRANDS WEEKEND, March 8-10, 2019. For more information see the program listing on pages 5 – 6.





# FALL 2018 & SPRING 2019 PROGRAMS

REGISTRATION IS OPEN AT  
WWW.NOVUSWAY.ORG OR CALL 828-684-2361



## Faith Alive

Old Testament Overview - Nov 2-4, 2018

Holy Baptism & Holy Communion - Feb 1-3, 2019

10 Commandments & Luther/Reformation - April 5-7, 2019

Four weekends – seven retreats covering each part of the small catechism + Luther/Reformation History. Experiential learning leaves lasting lessons and builds relationships. Creative worship, crafts, songs, games and a campfire create an experience long remembered. Lutheridge staff provide supervision for campers, sharing their faithful witness. Come alone or with a group. Lessons are geared to middle school, but 5th graders and high school youth are welcome. Adults are encouraged, but not required to attend with their youth. Pastors Mary and Tim Canniff-Kuhn provide leadership for all retreats with involvement from other teachers. **Youth: \$189; Adult: \$97**  
**Youth receive a \$30 discount by registering at least a month prior to the retreat.**



## Faith Journey Confirmation

October 19-21, 2018 – Worship • January 18-20, 2019 - Prayer

Bring your confirmation class to Luther Springs and let us do the teaching. Whether you bring youth to an occasional retreat to enhance what they are already learning or if you want to send youth to each of our retreats to cover all their confirmation learning time, come join us on the journey! Luther Springs' counselors will guide campers through the weekend including worship, Bible Study, campfires, games, canoeing, archery, swimming, hiking and more! **Youth: \$169; Adult: \$95 \*Early Bird special**



## 50Forward Living Well

Oct 19-21, 2018

Gather with others 50+ to find inspiration and information for Living Well in the late career/early retirement years. Engaging speakers, informative workshops, optional outings, and activities will explore this year's theme: LIVING SIMPLY. Creative worship, storytelling, delightful entertainment and great food make for a wonderful weekend. Bring a group of five and save! \* See 50Forwardlife.org for schedule and presenters. **Onsite: \$249; 5 or more: \$200; commuter: \$175**



## God Spa for Women

October 26-28, 2018

Worship and Bible Study Leader: Pastor Nancy Christensen  
Massage Therapist: Jill Kneuppel



Yoga Saturday and Sunday morning taught by: Jill Kneuppel  
Comfort, O comfort my people, says your God. Speak tenderly to Jerusalem, and cry to her that she has served her term, that her penalty is paid, that she has received from the Lord's hand double for all her sins. (Isaiah 40:1-2) The reign of God is like a family reunion where we gather around a plate of cookies and a pot of tea,

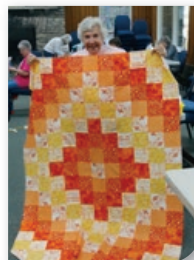
and everyone is welcomed home! We encourage and comfort, support and uplift one another, embracing the renewal of God in our midst. Together we know the rich blessing of poured-out love! This year's God Spa weekend at Lutheranch will offer wonderful opportunities for prayer and meditation, bible study, worship, spa activities, jewelry making, fellowship and relaxation. Massages will be available for an extra charge. We'll also have a tea luncheon, and a tea ceremony, so participants may bring their favorite tea cup! Come, and join us around the table of welcome! **Before 9/20: \$150; After \$180** Those who wait for the Lord shall renew their strength, they shall mount up with wings like eagles, they shall run and not be weary, they shall walk and not faint. (Isaiah 40:31)



## Quilting Bee

November 1-4, 2018

Join renowned teacher Holly Anderson for a weekend of stitching fun. Bring your own project or create a wall-hanging of Holly's design. The retreat will also include daily devotions, a Trunk Show, Show & Tell, optional field trips to local fabric stores and the Folk-Art Center. Bring friends and make new ones! **\$267**



## Awakening Soul 2018

Justice is the Body of Love – Love is the Soul of Justice

November 8-11, 2018

Featuring Ed Bacon – activist Episcopal priest, rector emeritus All Saints Episcopal Church, Pasadena, a regular guest on Oprah's Super Soul Sunday Series and author of the book, 8 Habits of Love, Heidi Kim – staff officer for Racial Reconciliation, TEC (The Episcopal Church) Larry Maze – retired bishop, The Episcopal Diocese of Arkansas, frequent presenter at the Haden Institute's Dream and Spirituality Conference, Catherine Meeks, PhD – executive director of Absalom Jones Center for Racial Healing and author of Living Into God's Dream and Standing on Their Shoulders and our chaplain, Brian Prior – bishop, the Episcopal Church in Minnesota and music by the Awakening Soul Ensemble. For more information visit [www.awakeningsoulpresents.org](http://www.awakeningsoulpresents.org)



## Trailblazers

November 9-11, 2018

Theme: Thankful! What does it mean to truly be thankful and live a life of Thanksgiving? We will explore our thankfulness, play games, canoe, do archery, swim, make crafts and enjoy campfires! Students will stay in cabins with counselors and can come on their own or with a church group. Adult leaders and/or parent chaperones are welcome to join us and stay in Kuehner Center motel style rooms. **Youth: \$130; Adult \$95 \*Early Bird Special**



## Living Forward with Joy & Peace

November 9-11, 2018

Living into the second half of life brings about a desire for self-renewal. We want to ensure our life is moving forward. Every age and life stage bring us closer in relationship to God and community. Come for an enriching and inspiring weekend while enjoying the beauty and peace of Luther Springs. Canoe Vause Lake, walk the trails, relax in a rocker with a book, and explore how God is calling you to serve Him in the second half of life. We'll explore biblical foundations about this life stage, enjoy meaningful discussions, sing hymns, exercise our creativity, make new friends, eat wonderful meals, and enjoy nature! Leaders: Margo Walbolt, ALOA FL; Pr. Stephen Kauffman and George Algozzina, Good Shepherd Lutheran Church, Tampa; and Pr. Richard Hafer, ALOA Executive Director. **\$135**



## Mountaintop Family Advent Retreat

November 30-December 2, 2018

Go on an ADVENTure to prepare for Christmas. Disconnect from the hustle of the holidays and discover the joy of time together. Create shared memories around traditions such as lighting the tree, making Advent wreaths, carol singing, and choosing and cutting your own Christmas Tree at a nearby tree farm! Rate includes lodging for two nights, meals, and programming (Tree is an additional fee). Leaders: Pastor Will Rose and Cindy Morton-Rose **Adult: \$115 Youth: \$60**



## Fun in the Son- Ski Retreats

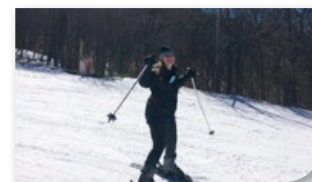
January 18-21, 2019,

Youth: \$154; Adult: \$97

February 1-3, 2019,

Youth: \$129; Adult: \$97

Let us handle your next youth ski retreat, while you sip hot cocoa by our fire! Lutherock staff will handle ski reservations, pick up your lift tickets, and rental cards before you arrive. Lutherock staff will provide evening programming and vespers each night. If your group doesn't want to ski, there are lots of other fun winter activities to do like sledding, tubing, hiking and ice skating! WE will work with you to create the experience you are looking for. Chaperones must accompany youth and provide transportation. \*Ski costs are not included.\*



## Wild Women Weekends

Feb 1-3, Feb 8-10, March 8-10, March 22-24, 2019

Adult women of all ages will gain fresh vision and new strength in the beauty of the mountains. Bring a group to deepen fellowship with women you know or come alone to find kindred spirits among women from across the southeast. Bible study and creative worship will focus on God's promise in transition times. How do we move from one season to another without fear or regret? Where does Jesus offer JOY at every stage? Thoughtful reflection + Laughter and FUN make for a wonderful retreat. Become a Wild

Women at Lutheridge! **Onsite: \$223; Commuter: \$210**



## EQUIP High School Leadership

February 15-17, 2019

Energize! Question! Understand! Intercede! Proclaim! This event is for students who are ready for more than the average youth event. They will explore theological issues, discern their gifts for leadership and be challenged! Adult leaders and/or parent chaperones are welcome to join us and stay in Kuehner Center motel style rooms. Counselors and event staff will lead camp activities and cabin time. **Youth: \$130; Adult: \$95 \*Early Bird special**



## Quilting Retreat

February 21-24, 2019

Join teachers Holly Anderson and Sharon Jefferies for a weekend of stitching and fun. You are invited to bring your own unfinished projects or learn new skills and techniques related to "the nines", "Bloomin' 9-Patch", "Double 9-Patch" or "Single Irish Chain". "To the nines" is an English idiom meaning "to perfection" or "to the highest degree". We will take a look at this theme throughout the weekend to see how it applies to our life experiences and quilting designs. The retreat will also include a Teacher's Trunk Show one evening, Show & Tell with your personal projects and accomplishments a second night, and a "See What I Did" on the third. **\$305 Private Room; \$255.00 Double Occupancy**





# NON SUMMER OPPORTUNITIES

TO REGISTER CALL 828-684-2361  
OR WWW.NOVUSWAY.ORG



## Master Builders February 22-24, 2019

Like working with your hands? Join us while we do big and small projects to improve Luther Springs, enjoy the lake, tell stories around the campfire, enjoy a healthy competition through camp games and sit on the back porch talking about our faith. Leader: Steven Helm **\$115**



## Handbell Workshops Feb 22-24 and March 1-3, 2019

Two opportunities for individual ringers or entire choirs to gain skills for their home ministries. Renowned clinicians share skills and inspiration. Choirs will leave with pieces that can be used in their own congregation.  
Feb 22-24, 2019: Advanced: William Payn, Intermediate – David Harris  
March 1-3, 2019: Advanced – David Harris, Intermediate – Susan Berry  
Please see the Lutheridge website for individual choir pieces.  
**Onsite: \$260; Commuter: \$210**



## Women's Wellness Weekend March 1-3, 2019

Take some time for yourself and let us take care of you! We will focus on taking care of ourselves physically, spiritually, and mentally. Enjoy fellowship, Bible study, and wellness opportunities like Yoga, Aroma Touch Therapy, Hiking, DIY Bath Salts, Essential Oils 101, and time with your sisters in Christ! **\$205**



## Quilting Retreat March 4-8, 2019

Spend a week with other quilters in a relaxed atmosphere. Teachers will assist with projects, as well as answer questions regarding different techniques. Quilters may work on provided projects for gift ideas & to benefit non-profits, as well as their own projects. There will be a day trip to a local quilt shop and the opportunity to share some of your own creations! **\$370**



## Grands Weekend March 8-10, 2019

GRANDPARENTS & GRANDKIDS join us for a GRAND WEEKEND enjoying a time of spiritual growth and fun. Each day includes regular camp activities, cookie baking, worship, Bible study, exploring creativity, sharing stories, growing together in Christ and family free time. Children may stay with grandparent(s) in motel-style room or in a cabin with a Luther Springs counselor. **Adult: \$105; Youth: \$70**



## Parenting in The 50Forward Years: Parenting Our Parents & Parenting Adult Children March 22-24, 2019

Join others in the late career/early retirement years to find support and information for parenting challenges. Two tracks, each led by a professional counselor, will offer advice and resources for those struggling with parenting their parents or unsure how to best parent adult children. Choose the track that fits your needs, then come together for worship, fellowship – and refreshment in God's creation.  
**\$230 per person (2 nights/4 meals)**



## God Spa for Women April 5-7, 2019

Soak in the beautiful scenery and solitude of Luther Springs, relaxing your mind, body, and spirit. Activities may include: faith filled conversation, devotions, music, journaling, guided meditation, relaxing, and spa-type activities such as facials, manicures, pedicures and massages. **Single occupancy: \$230; Double occupancy: \$180, Cabin: \$155**



## Exploring Transitions, True to Myself April 18-20, 2019

First of a four part retreat series sponsored by Portico Benefit Services. While everything seems to be changing within and around us, we seek to determine our true nature. In this retreat, we will explore our whole unbroken selves amidst our life stories, which we offer up freely and joyfully to the world. Designed for rostered leaders, but open to anyone amid a life transition. Whether that be retirement, new call, divorce, loss of a loved one or emotional distress. Whatever your transition, come away to Lutheranch to listen, discern, and connect with God and others in transition. The retreat offers the rhythm of liturgy that includes music, scripture, poetry, and time for individual and small group reflection within a sacred, safe space. Participants are invited to pause, listen and gain clarity.



**Private Room: \$425; Double: \$350; Transportation: \$50**



## Create In Me April 25-28, 2019

Give creativity larger space in your life. Explore the FRUITS of the SPIRIT through music, words, paint, movement, fabric, drums, paper, clay, and more! Inspiring Bible study by NC Synod Bishop Tim Smith and creative worship are highlights of this retreat. Learn from artists excited to share their skills with you. No experience is needed! Let God create in YOU! **Onsite: \$310; Commuter: \$210**



## 50 Forward Backpack Trip April 25-28, 2019

An adventure designed for those 50+. Includes 2 days of hiking on beautiful trails and 2 nights camping, plus 1 overnight at camp. Here's a chance to enjoy nature at its finest with folks your own age. Beginners welcome. Finish the expedition with a celebration meal, plus a toast and a soak in natural hot springs. See 50Forwardlife.org for packing list and description of trail. **\$249**



## Trail Maintenance Weekend April 26-28, 2019

There is always something to be done at Lutherock! All are welcome: youth groups, men's groups, women's groups, congregations, families and individuals! Projects could include trail maintenance, splitting and stacking firewood, blowing leaves, pressure washing, putting up and taking down platform tents and more. Contact Jacob Ridenhour with questions: jridenhour@lutherock.com. Meals provided (Saturday Breakfast-Sunday Lunch). Housed in cabins or Founders Lodge. If these dates don't work for you but you want to volunteer, please be in touch with Jacob! **FREE**



## Respite in the Wilderness April 30 – May 2, 2019

All rostered leaders and church professionals are invited to join us for a retreat of rest and renewal through prayer and study as we close out the busy season of Lent and celebrate the beginning of the season Easter. Reverend Rick Malivuk, BBA, MBA, MDiv., CFT will address how God calls for us to care for ourselves while caring for others. We are also excited to announce that Bishop Suarez will be in attendance! NovusWay Ministries would like to say thank you to all rostered ministers for giving this respite time as a gift to other church leaders. Guests are only charged for the cost of food. **\$100**



## Theology on Tap Weekend May 3-5, 2019

Join us for a weekend of Craft Brews and the GOOD NEWS! Pastors Andrea and Kyle Bates will lead us in Bible study as we visit some local breweries which could include Blowing Rock Ale House, Lost Province Brewing Company, Appalachian Mountain Brewery, Flat Top Brewery, Beech Mountain Brewery, and Blind Squirrel Brewery. Lutherock staff will provide transportation for the brewery tour. (Bring money for brews and Saturday dinner.) Each participant will receive a Lutherock pint glass. **\$210**





# Magnitude Of Gratitude

RidgeRock Builders • Ranch Builders • Friends of Luther Springs

**Builders/Friends** contribute \$500 or more annually. **Master Builders** give \$1000 - \$2499, **Cornerstones** contribute \$2500 - \$4999, **NovusWay Champions** provide support of \$5000 - \$9999, and **Keystones** make annual gifts of \$10000 - \$24999. **Foundation Builder/Founders Circle** donors contribute \$25000 or more annually. The following donors have attained their gift levels from April 1 to August 31, 2018. Please note that the list does not include those who were listed in previous LINK newsletters, nor does it include those who contributed to Standing on the Promise, Complete the Dream or Mission Possible Campaigns.

## Ridge Rock Builders

### NovusWay Champions (\$5,000 to \$9,999)

Rev. Theresa Park Hannon  
Mr. and Mrs. Raymond L. Hendrix Jr.  
Mr. and Mrs. Milton D. Jellum  
Mr. and Mrs. T. Irvin Pund

### Cornerstones (\$2,500 to \$4,999)

Ms. Beth Branham  
Mr. and Mrs. John P. Evans  
Mr. and Mrs. Keith A. Johnson  
The Rev. Mike and Hannah Ward

### Master Builders (\$1,000 to \$2,499)

The Rev.and Mrs. J. Henri Bishop  
Mr. and Mrs. Charles H. Carlson  
Mr. and Mrs. Thomas F. Culverwell  
Mr. and Mrs. John W. Downing  
Mr. and Mrs. Boyd W. Harris IV  
Mr. and Mrs. Kurt W. Karriker  
Mr. and Mrs. Frank A. Kretschmer II  
Dr. and Mrs. John D. Lang  
Mrs. Peggy K. Mann  
Mr. and Mrs. Thomas L. Milburn  
The Rev. and Mrs. Bill B. Mims Jr.  
Mr. and Mrs. John T. Mims  
Mr. and Mrs. Larry Moeller  
Mr. and Mrs. Frank Navratil  
Dr. and Mrs. Alfred E. Policke  
Drs. Roger M. Swagler and Julia Marlowe  
Dr. and Mrs. Philip H. Wessinger  
The Rev. and Mrs. Gregory B. Williams

### RidgeRock Builders (\$500 to \$999)

Anonymous  
Mr. and Mrs. Rick Anger  
Mr. and Mrs. William H. Arroyo  
The Rev. Dr. and Mrs James S. Aull  
Mr. and Mrs. Phil Bostian  
Dr. Dorothy P. Brandt  
Mr. and Mrs. Jerry A. Butt  
The Revs. Tim and Mary Canniff-Kuhn  
Dr. and Mrs. Walter A. Carpenter  
Mr. and Mrs. John E. Carriker  
Mr. and Mrs. Schuyler R. Darstein  
Mr. and Mrs. Edwin S. Eargle II  
Mr. and Mrs. Zachary Gordon  
Ms. Jacquelyn S. Griffith  
Mr. and Mrs. Giles Hammat  
Mr. and Mrs. John Hangartner  
Mr. Andrew Heller and Ms. Jane Knappe  
Mr. and Mrs. Daniel Hollenbach  
The Rev. Dr. and Mrs David R. Keck Sr.  
Mr. and Mrs. David Key  
Ms. Linda E. Lael  
Mr. and Mrs. Mark Lee  
Mr. and Mrs. Chris Mallette  
Mr. and Mrs. James Mattern  
Mr. and Mrs. Scott J. McMullen  
Mr. and Mrs. Kenneth D. Nelson  
The Rev. Nancy S. Oliver  
Mr. and Mrs. David L. Patrick  
Mr. and Mrs. Conrad L. Quanstrom  
Mr. and Mrs. Mark Scheuer  
Mr. and Mrs. James J. Scooler  
Mr. and Mrs. Joel H. Searfoss  
Mr. and Mrs. Gerald Sisk  
Mr. and Mrs. Mike Tinker  
Mr. and Mrs. Kevin S. Wicker  
Mr. and Mrs. Nicholas S. Wodogaza

## Ranch Builders

### NovusWay Champions (\$5,000 to \$9,999)

Mr. Ron Prater and Mrs. Arolue Flemmen Prater  
Drs. Fred and Karin B. Rock  
Mr. and Mrs. Paul C. Scheufler

### Cornerstones (\$2,500 to \$4,999)

Ms. Lou dell Printz and Mr. Dennis Fowler

### Master Builders (\$1,000 to \$2,499)

Mr. and Mrs. Bob Adams  
Mr. and Mrs. David Grigsby  
Mr. and Mrs. Ronald Hall  
Mr. and Mrs. Alvin P. Kates  
Mr. and Mrs. Norman G. Schuessler Jr.

### Ranch Builders (\$500 to \$999)

Mr. and Mrs. Herb Hester  
Mr. and Mrs. Mike Mynhier  
Mr. and Mrs. David L. Patrick

## Friends of Luther Springs

### Master Builders (\$1,000 to \$2,499)

The Rev. and Mrs. Dave Kruger  
Ms. Rosemary Peitz  
Mr. and Mrs. John B. Wuertz

### Friends of Luther Springs (\$500 to \$999)

Mr. and Mrs. Thomas F. Culverwell  
Mrs. Cindy Flachmeier  
Mr. and Mrs. James Kunzman  
The Rev. Paul Lutze  
The Rev. and Mrs. Rusty May  
The Rev. and Mrs. Clark B. McPhail  
The Rev. and Mrs. Arden L. Norum  
Mr. and Mrs. Barrie Reed

# Honor Gifts

The following honor gifts to the annual fund were received between April 1 and August 31, 2018. The lists are constructed in alphabetical order by the last name of the person honored. Honor gifts to campaigns will be listed in special publications at the conclusion of each campaign.

### The Revs. Tim and Mary Canniff-Kuhn

Mr. and Mrs. Elliott Williams

### Marley and Lily Bassett

Mrs. Nancy D. Clem

### Mrs. Dorothy Carpenter

Ms. Linda E. Lael

### Dr. Tina Carpenter

Ms. Linda E. Lael

### Dr. Walter and Mrs. Amy Carpenter

Ms. Linda E. Lael

### Sydney Davis

Mr.and Mrs. Jay McCarraher

### Katelyn Davis

Mr.and Mrs. Jay McCarraher

### Clark, Brett and Lyndsey Ebener

Ms. Beth Branham

### Leona Feldhausen

The Rev. Klaus O. R. Koch

### The Rev. Dr. Richard Graf

Mr. and Mrs. Jason Arnold

### Ordination of The Rev. Joanna C. Gragg

Misc Offering

### Martha Haigler

Brigadier General Janice M. Haigler

### Boyd W. Harris IV

The Rev. and Mrs. Fritz Wiese

### The Rev. Doug Kearney

Epiphany Lutheran Church Winston-Salem, NC

### Linda Lael's Birthday

Mrs. Frances R. Daily

### Joe and Debbie Lundell

Ms. Nancy Blose

### Kaylyn McCarraher

Mr. and Mrs. Jay McCarraher

### Cody & Kristin McCarraher

Mr. and Mrs. Jay McCarraher

### The Rev. John and Mrs. Liz Propst

Ms. Susan McKay

### Bishop Timothy Smith

Mr. and Mrs. Andrew N. Massey

### Edd and Jane Wicker

Mr. and Mrs. Kevin S. Wicker





# Memorial Gifts

The following memorial gifts to the annual fund were received between April 1 and August 31, 2018. The lists are constructed in alphabetical order by the last name of the person memorialized. Memorial gifts to campaigns will be listed in special publications at the conclusion of each campaign.

**Larry Areheart**

Mrs. Peggy K. Mann

**Robert Baldwin**

Mr. and Mrs. Moncelle L. Berg

**Bruce Bell**

The Rev. Glynn S. Bell

**Chaplain Gilmer Boggs**

Mrs. Peggy J. Boggs

**Ann Friedrichs**

The Rev. Terry W. Agner and Ms. Nancy Bourne  
Mrs. Linda Bennett  
Mrs. Dorothy R. Carpenter  
Tina M. Carpenter and Ms. Laura Lane  
Dr. and Mrs. Walter A. Carpenter  
Ms. Joyce M. Carroll  
Mr. and Mrs. Preston G. Exley  
Mr. Fred G. Friedrichs  
The Rev. and Mrs. W. Eric Friedrichs  
Mr. and Mrs. Jim Hansen  
Dr. and Mrs. R. Boyd Hendrix  
The Rev. W. Douglas and Elizabeth K. Kearney  
Mr. and Mrs. T.D. Lentz  
The Rev. Dr. and Mrs. William B. Trexler  
Mr. and Mrs. Daniel Valldeperas

**Darren Henry Golnitz**

Mr. B. Heath and Melody Harper

**Kathleen Gragg**

Mrs. Peggy K. Mann  
Mr. Emmett E. Wicker

**Rev. John Heyer**

Mr. and Mrs. George Askew  
Mr. and Mrs. Charles Bridgers  
Mr. and Mrs. William Cornwell  
Mr. and Mrs. Edgar O. Mehlman  
The Rev. and Mrs. Don Poole  
The Rev. Dr. and Mrs. John L. Setzler  
Mrs. Sue Silver

**Melba Holt**

Mr. and Mrs. Alvin P. Kates

**The Rev. Dr. William M. Johnson Sr.**

Mrs. Madeline Johnson

**Ann Koch**

The Rev. Klaus O.R. Koch

**Eleanor Kraus**

Mr. and Mrs. Alvin P. Kates

**Grace Meynardie**

Mrs. Edna Earle F. Dowd †

**Phillip Perry**

Mr. and Mrs. Ra B. Schooley

**Janet Powell**

The Revs. Tim and Mary Canniff-Kuhn  
Ms. Edith Cayton  
Ms. Eileen D'Addezio  
Mary Martha Circle First United Methodist Church  
Cary, NC  
Togetherness Sunday School Class  
First United Methodist Church Cary, NC  
Ms. Susan Hale  
Ms. Janet Harrison  
Ms. Flora Laspaluto  
Ms. Karen Maher  
Ms. Helen Vennard

**Al and Hazel Printz**

Ms. Lou dell Printz and Mr. Dennis Fowler

**Nancy Richbourg**

The Rev. Terry W. Agner and Ms. Nancy Bourne  
Ms. Ann N. Ashford  
Mr. and Mrs. George Boyd  
Mr. and Mrs. Jerry A. Butt  
Mr. and Mrs. Schuyler R. Darstein  
Mr. and Mrs. Carl Fische  
Mr. Charles Finner  
Ms. Elizabeth Gamble and Dr. Peter Lichstein  
Mr. and Mr. Thomas Hudgins  
Ms. Betty Huss  
Ms. Catherine Lyerly  
The Rev. Dr. and Mrs. John L. Setzler  
Ms. Kathelene M. Smith  
UNCG University Libraries Staff Association

**Claude Wesley Roberts**

Ms. Iona Laura Perry

**Bill Schroeder**

Mr. and Mrs. Keith A. Johnson

**Betty Snavely**

Mr. and Mrs. Alvin Kates

**Dorothy Trexler**

Mrs. Dorothy R. Carpenter  
Dr. Tina M. Carpenter and Ms. Laura Lane  
Dr. and Mrs. Walter A. Carpenter  
Mrs. Peggy K. Mann  
Mr. Emmett E. Wicker

**Compton and Jenny Usina**

Mr. and Mrs. Martin Teem

**Tom Waggoner**

Ms. Jane Waggoner

**The Rev. Dr. Ralph J. Wallace**

Mr. and Mrs. Richard Jenkins

**Ann Marie Weigeshoff**

Dr. and Mrs. Dick Conrad  
Glor Durkin  
Mr. and Mrs. Richard Entwistle  
Ms. Alice F. Martel  
Mr. Paul Meyers and Mrs. Lynne Hoyt-Meyers  
Ms. Sandy Peele

† Deceased

**CORRECTION:**

Our apologies are extended to Mr. and Mrs. Robert H. Duncan of Chapin, SC. Their gift in memory of The Rev. Charles J. Shealy was incorrectly listed in the 2017 Annual Report.

## LEAVE A LEGACY – CREATE A PLANNED GIFT

### Estate Planning Resources

NovusWay, Inc. is pleased to partner with the ELCA Foundation to provide specialized Regional Gift Planners to assist those who wish to include our ministry in their estate plans. Our Gift Planners assist with selecting the best asset for the gift and assist with completing the paperwork. Additionally, they will check in with you each year in case something changes. Rev. Ana Lugo serves those in Florida and Deacon Mitzie Schafer serves those in NC and SC. They are also available to visit with residents of GA, TN and VA.

A Gift Plan is a one-page illustration showing how you want your assets to be distributed to provide for your loved ones and to bless the ministries and charities you care about when you pass, ministries like NovusWay. Assets include your house, retirement, investment accounts, stocks and bonds, or insurance policies. These are resources we use during our lifetime and draw on during our retirement. Your Gift Plan will show the best way to give, using the best asset for the best beneficiary.

In many cases, you can set up a gift with a simple beneficiary designation. You

can designate NovusWay or one of our camps and you can even indicate how you want the funds used.

The ELCA Foundation and our Regional Institutions fund their work on behalf of families, congregations and organizations of the ELCA, like NovusWay.



**Rev. Ana L. Lugo**



**Mitzie Schafer, Deacon**

You may contact Pastor Lugo or Mitzie to schedule an appointment. Their contact information is as follows: **Pastor Ana Lugo**, 904-219-2769, Ana.Lugo@elca.org. or **Mitzie Schafer**, 803-413-7827, Mitzie.Schafer@elca.org.



# You Don't Have To Be Big To Make A Difference



Since 1903, St. John's Lutheran Church on the corner of Jackson and Calhoun Streets in Johnston, South Carolina, has been an anchor for their community. The congregation's 115-

year history includes a list of well-loved pastors, construction of a parish hall, congregation and community ministries, births and deaths, members coming and members leaving. Recent years have seen an increase in members leaving the community, others becoming infirm and homebound. *"It's been sixteen years since we had a full-time pastor,"* laments member and organist, Jean Clark.

On most Sundays these days there are about 5 faithful members present for worship. Sunday worship is led by a rotation of several retired clergy, one of them NovusWay Ministries' Development Director Pastor Jan Setzler. His passion for the outdoor ministries of NovusWay often fills time before and after worship with reports of God's amazing work in the ministries of Lutheridge, Lutherock, Luther Springs and Lutheranch. Interest in God's work in these camping ministries among the members grew. St. John's recently made a gift of \$500 to be used for camper scholarships to send kids from places far beyond Johnston to camp. This gift provided assistance for two or three campers.

Mr. William Grandy, President of the congregation, raised the possibility of a gift with the others. *"Through the years,"* he said, *"we had some tough times when we even had a hard time paying the preacher. But God took care of us. We're blessed right now with more than we need. St. John's supports our local food pantry each year. But we can do good beyond our community. We heard Pastor Setzler talking about all the good things happening at our camps*

NONPROFIT ORG  
US POSTAGE  
PAID  
ASHLEYVILLE NC  
PERMIT #575

**NOVUS WAY, INC**  
28 SPRUCE DRIVE  
ARDEN, NORTH CAROLINA 28704  
Change Service Requested

*and decided that's something we need to support!"* And they did. And campers are blessed.

NovusWay Ministries' policy is that no one of any age will ever be turned away from anything the ministry offers anywhere for lack of funds. Since 2009 NovusWay distributes approximately \$125,000 in scholarship assistance each year to people of all ages. In 2017, 495 of more than 5,000 participants in some faith formation conference, retreat or camp received scholarships. These are over and above the financial support congregations provide their members. We are grateful for faithful donors and for congregations large and small who send special gifts for our scholarship program. You can help too.

Make your contribution today online at [www.novusway.org](http://www.novusway.org) or by mail to NovusWay Ministries, PO Box 830, Arden, NC 28704.

## THE LINK

The LINK is published 3 times per year by NovusWay Ministries. Standard postage paid at Arden, NC.  
Postmaster: Please send address changes to: The LINK, 28 Spruce Drive, Arden, NC 28704.

### NOVUS WAY BOARD OF TRUSTEES

#### Florida/Bahamas Synod

The Rev. Don Erickson, Todd Johnson

#### North Carolina Synod

Gwen Glaeser, The Rev. Naomi Sease-Carriker

#### South Carolina Synod

The Rev. Susan J. Crowell, Kristen Clanton Williams

#### Southeastern Synod

The Rev. Dale A. Sillik, Mary K. Peterson

#### At Large

Charles Bridgers,  
Dr. Everett Flanigan,  
Susan Lee, Katherine Till,  
Larry Moeller, Joel D. Rentz

#### Bishops

The Rev. H. Julian Gordy  
The Rev. Dr. Timothy M. Smith  
The Rev. Pedro M. Suarez  
The Rev. Herman Yoos

### ADVANCEMENT STAFF

Sandra Holland, Development Associate  
Dale Nettnin, Development Associate  
Debbie Lundell, Special Events Coordinator  
The Rev. Jan Setzler, Co-Development Director  
Keith Trout, Co-Development Director

### PROGRAM STAFF

The Rev. Mary Canniff-Kuhn, Lutheridge Program Co-Director  
The Rev. Tim Canniff-Kuhn, Lutheridge Program Co-Director  
Sue Mendenhall, Luther Springs Program Director  
Kara & Jacob Ridenhour, Lutherock Directors

### EXECUTIVE STAFF

Boyd W. (Bo) Harris IV, Executive Director, CEO  
Becky Maxwell, VP Finance & Support Services  
Margo Rabon, LINK Editor  
Craig Rieger, VP of Sites & Facilities

NovusWay is owned and operated by the Florida-Bahamas, NC, SC, and Southeastern synods of the Evangelical Lutheran Church in America and serves all ages from the SE USA. Its camp and conference facilities are Lutheridge, 160 acres in Arden, NC, known for its summer camp and year-round ministry programs; Lutherock, 762 acres on Sugar Mt., near Newland, NC, known for its rugged, outdoor adventure ministry; Lutheranch, 519 pristine acres in Tallapoosa, GA and Luther Springs' 350 acres on the shores of Lake Vause in Hawthorne, Florida.